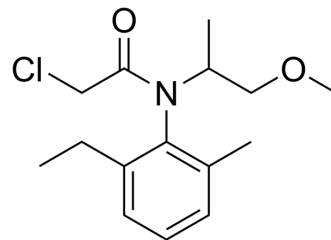


## Metolachlor

Cat. No.:	HY-B1871
CAS No.:	51218-45-2
Molecular Formula:	C <sub>15</sub> H <sub>22</sub> ClNO <sub>2</sub>
Molecular Weight:	283.79
Target:	Others
Pathway:	Others
Storage:	Please store the product under the recommended conditions in the Certificate of Analysis.



### BIOLOGICAL ACTIVITY

#### Description

Metolachlor is a pre-emergent selective, chloroacetanilide herbicide for the control of a variety of annual grass and broad leaf weeds in corn and other crops. Metolachlor is a chiral herbicide consisting of four stereoisomers<sup>[1][2]</sup>.

### REFERENCES

- [1]. Jingqian Xie, et al. Metolachlor Stereoisomers: Enantioseparation, Identification and Chiral Stability. *J Chromatogr A*. 2016 Sep 9;1463:42-8.
- [2]. D M Stamper, et al. Biodegradation of the Acetanilide Herbicides Alachlor, Metolachlor, and Propachlor. *Crit Rev Microbiol*. 1998;24(1):1-22.

**Caution: Product has not been fully validated for medical applications. For research use only.**

Tel: 609-228-6898

Fax: 609-228-5909

E-mail: tech@MedChemExpress.com

Address: 1 Deer Park Dr, Suite Q, Monmouth Junction, NJ 08852, USA