

## Metolachlor-d<sub>6</sub>

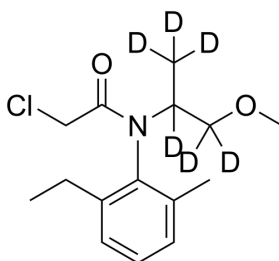
Cat. No.: HY-B1871S  
 CAS No.: 1219803-97-0  
 Batch No.: 312418  
 Chemical Name: Acetamide, 2-chloro-N-(2-ethyl-6-methylphenyl)-N-[1-(methoxymethyl-d<sub>2</sub>)ethyl-1,2,2,2-d<sub>4</sub>]-

### PHYSICAL AND CHEMICAL PROPERTIES

Molecular Formula: C<sub>15</sub>H<sub>16</sub>D<sub>6</sub>ClNO<sub>2</sub>  
 Molecular Weight: 289.83  
 Storage:
 

|            |       |          |
|------------|-------|----------|
| Pure form  | -20°C | 3 years  |
|            | 4°C   | 2 years  |
| In solvent | -80°C | 6 months |
|            | -20°C | 1 month  |

Chemical Structure:



### ANALYTICAL DATA

Appearance: Light yellow to yellow (Liquid)  
<sup>1</sup>H NMR Spectrum: Consistent with structure  
 Purity (HPLC): 98.58%  
 Isotopic Enrichment: 99.30%  
 Conclusion: The product has been tested and complies with the given specifications.

**Caution: Product has not been fully validated for medical applications. For research use only.**

Tel: 609-228-6898      Fax: 609-228-5909      E-mail: tech@MedChemExpress.com  
 Address: 1 Deer Park Dr, Suite Q, Monmouth Junction, NJ 08852, USA