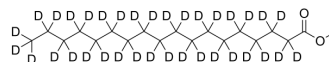


Methyl stearate-d35

Cat. No.:	HY-B1934S1
CAS No.:	29823-25-4
Molecular Formula:	C ₁₉ H ₃ D ₃₅ O ₂
Molecular Weight:	333.72
Target:	Isotope-Labeled Compounds
Pathway:	Others
Storage:	Please store the product under the recommended conditions in the Certificate of Analysis.



BIOLOGICAL ACTIVITY

Description	Methyl stearate-d35 is the deuterium labeled Methyl stearate. Methyl stearate, isolated from <i>Rheum palmatum</i> L. is a component of soybean and rapeseed biodiesels ^[1] .
In Vitro	Stable heavy isotopes of hydrogen, carbon, and other elements have been incorporated into drug molecules, largely as tracers for quantitation during the drug development process. Deuteration has gained attention because of its potential to affect the pharmacokinetic and metabolic profiles of drugs ^[1] . MCE has not independently confirmed the accuracy of these methods. They are for reference only.

REFERENCES

- [1]. Russak EM, et al. Impact of Deuterium Substitution on the Pharmacokinetics of Pharmaceuticals. *Ann Pharmacother.* 2019;53(2):211-216.
- [2]. Mitsuo Miyazawa, et al. Volatile components of the Rhizomes of *Rheum palmatum* L. *Flavour and Fragrance Journal.* 1996 Jan.

Caution: Product has not been fully validated for medical applications. For research use only.

Tel: 609-228-6898

Fax: 609-228-5909

E-mail: tech@MedChemExpress.com

Address: 1 Deer Park Dr, Suite Q, Monmouth Junction, NJ 08852, USA