

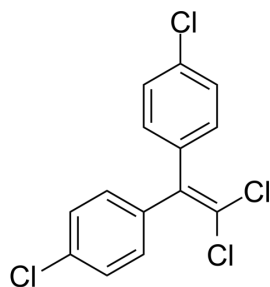
## p,p'-DDE

Cat. No.: HY-B1986  
CAS No.: 72-55-9  
Batch No.: 78989  
Chemical Name: Benzene, 1,1'-(2,2-dichloroethenylidene)bis[4-chloro-

### PHYSICAL AND CHEMICAL PROPERTIES

Molecular Formula: C<sub>14</sub>H<sub>8</sub>Cl<sub>4</sub>  
Molecular Weight: 318.03  
Storage: 4°C, protect from light  
\* In solvent : -80°C, 6 months; -20°C, 1 month (protect from light)

### Chemical Structure:



### ANALYTICAL DATA

Appearance: White to off-white (Solid)  
<sup>1</sup>H NMR Spectrum: Consistent with structure  
LCMS: Consistent with structure  
Purity (LCMS): 99.50%  
Conclusion: The product has been tested and complies with the given specifications.

**Caution: Product has not been fully validated for medical applications. For research use only.**

Tel: 609-228-6898

Fax: 609-228-5909

E-mail: tech@MedChemExpress.com

Address: 1 Deer Park Dr, Suite Q, Monmouth Junction, NJ 08852, USA