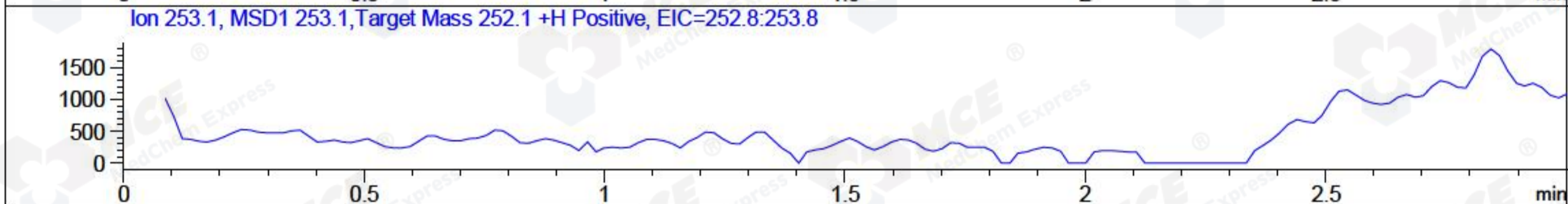
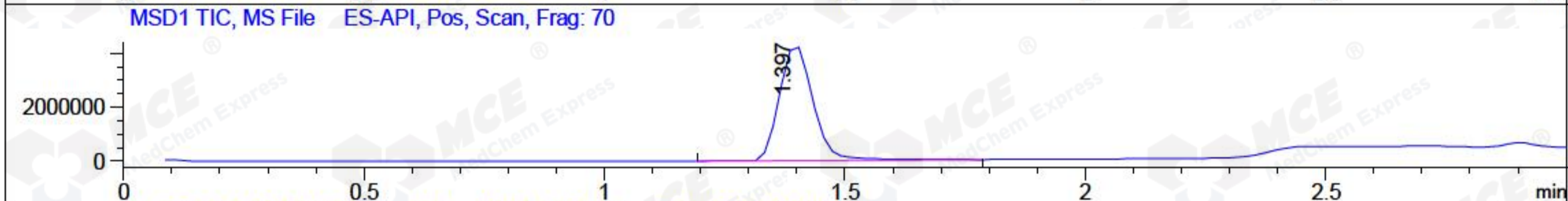
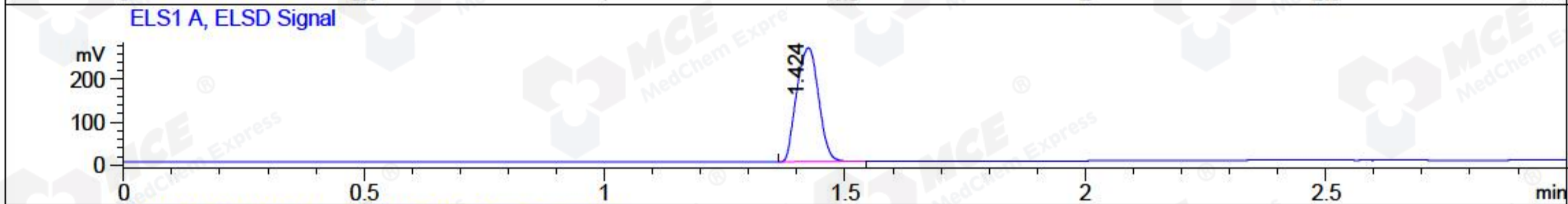
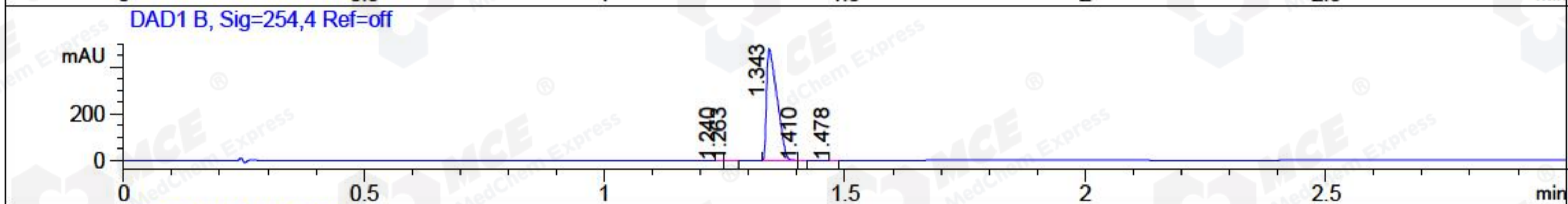
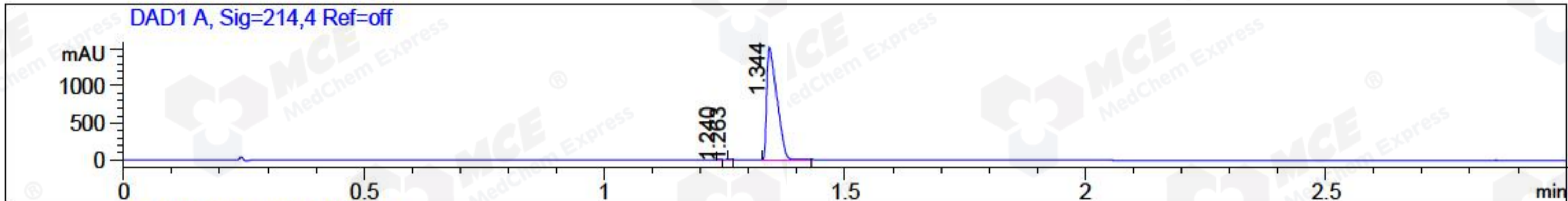


File ..3\Data\20171127\20171127\BIZ2017-N27-WYQ3.D Tgt Mass (CHM):  
 Injection Date : 27 Nov 17 6:07 pm +0800 Seq. Line : 113  
 Sample Name : BIZ2017-N27-WYQ3 Location : P2-A-09  
 Acq. Operator : SYSTEM Inj : 1  
 Spec. Reported : MS Integration Inj Volume : 1 ul  
 Acq. Method : D:\LCMS03\Data\20171127\20171127\1-POS-3MIN(1.2ML).M  
 Analysis Method : D:\LCMS03\Data\20171127\20171127\1-POS-3MIN(1.2ML).M  
 Catalog No : HY-B2244 Batch#27440  
 Method Info : Mobile Phase: A: water(0.01%TFA) B:ACN(0.01%TFA)  
 Gradient: 5% to 95%B within 1.3 min  
 Flow Rate :1.2ml/min  
 Column :Poroshell 120 EC-C18, 3.0\*50mm,2.7um A-RP-170  
 Oven Temperature : 45C



Integration Results for DAD1 A, Sig=214,4 Ref=off

RetTim	Width	Area	Height	Area%	MS (+)
1.24	0.01	0.11	0.23	0.00	ND
1.26	0.01	0.25	0.48	0.01	215
1.34	0.02	2192.89	1509.45	99.98	199

Integration Results for DAD1 B, Sig=254,4 Ref=off

RetTim	Width	Area	Height	Area%	MS (+)
1.24	0.01	0.04	0.08	0.01	ND
1.26	0.01	0.38	0.68	0.05	215
1.34	0.03	726.31	481.47	99.85	199
1.41	0.01	0.61	0.77	0.08	199
1.48	0.01	0.07	0.13	0.01	199

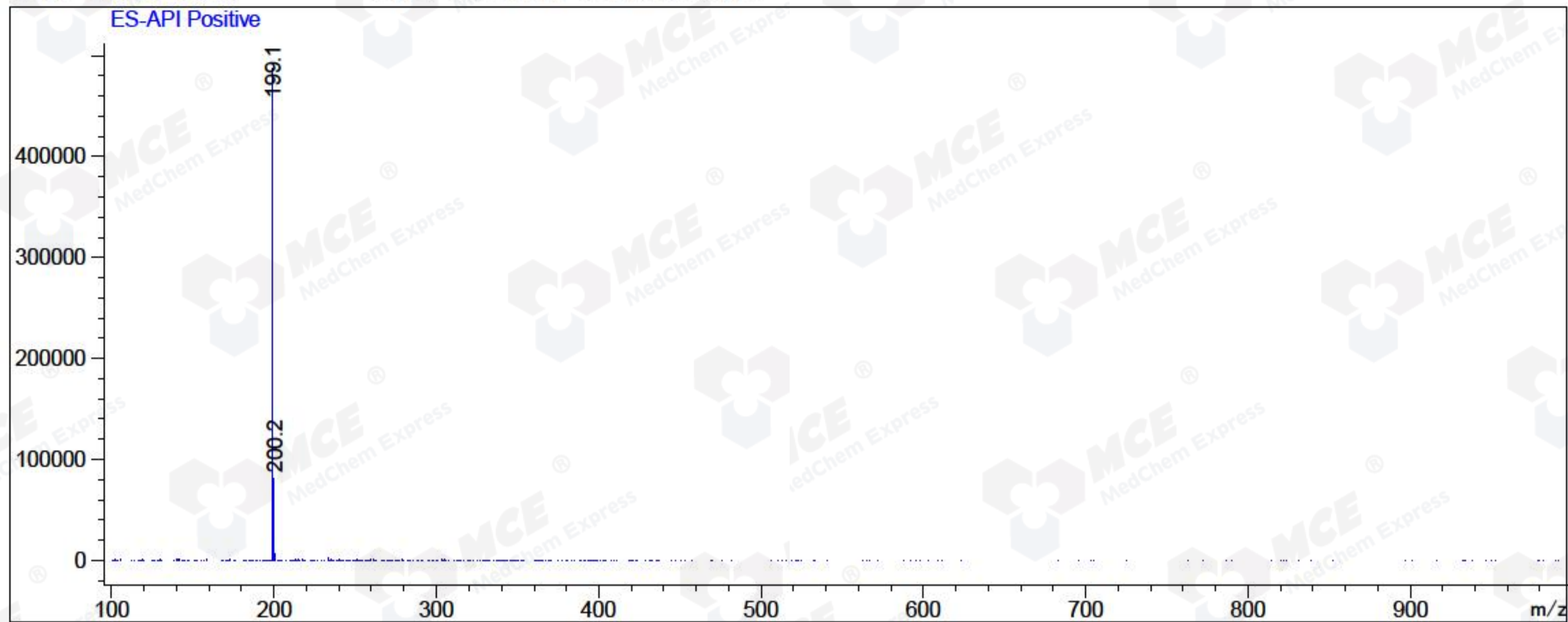
Integration Results for MSD1 TIC, MS File

RetTim	Width	Area	Height	Area%	MS (+)
1.40	0.08	20612976.00	4257882.50	100.00	199



Ret. Time: 1.40

<<<< POSITIVE SPECTRA >>>>



\*\*\* End of Report \*\*\*