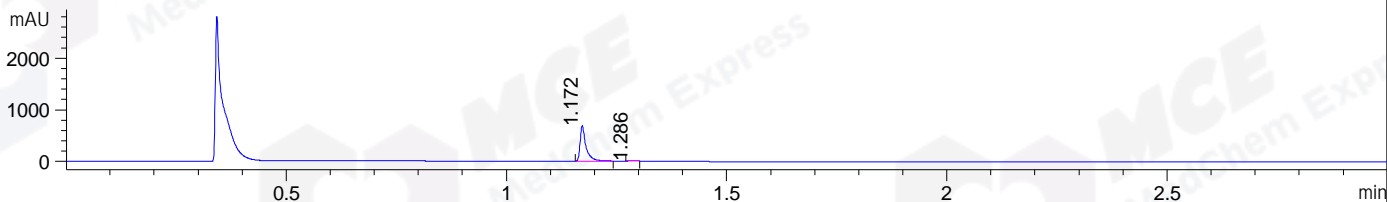
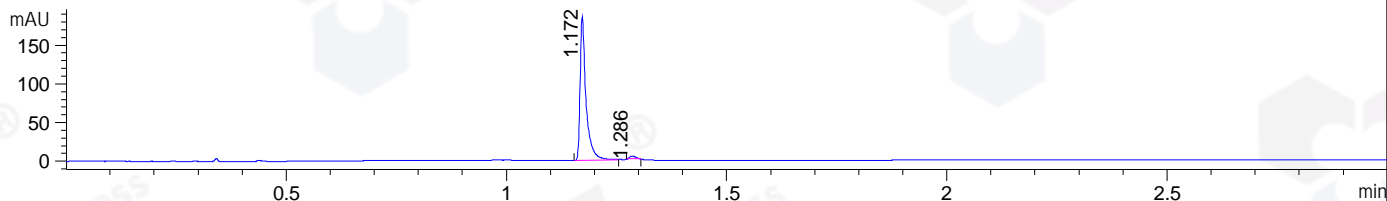


File ..123 2019-11-23 08-32-47\CPK2019-N20-23790.D Tgt Mass (CHM):  
Injection Date : 23 Nov 19 9:58 am +0800 Seq. Line : 17  
Sample Name : CPK2019-N20-23790 Location : P1-B-08  
Acq. Operator : SYSTEM Inj : 1  
Spec. Reported : MS Integration Inj Volume : 0.9 ul  
Acq. Method : D:\LCMS03\Data\20191123\20191123 2019-11-23 08-32-47\1-POS-3MIN.M  
Analysis Method : D:\CHEM32\1\DATA\2019\20191123\20191123 2019-11-23 08-32-47\1-POS-3MIN.M  
Catalog No : HY-D0006 Batch# 23790  
Method Info : Mobile Phase: A: water(0.01%TFA) B:ACN(0.01%TFA)  
Gradient: 5% to 95%B within 1.3 min  
Flow Rate :1.8ml/min  
Column :SunFire C18, 4.6\*50mm,3.5um A-RP-446  
Oven Temperature : 45C

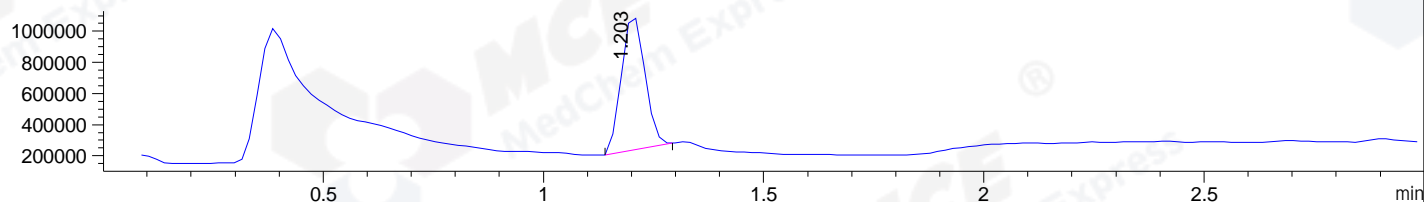
DAD1 A, Sig=214,4 Ref=off



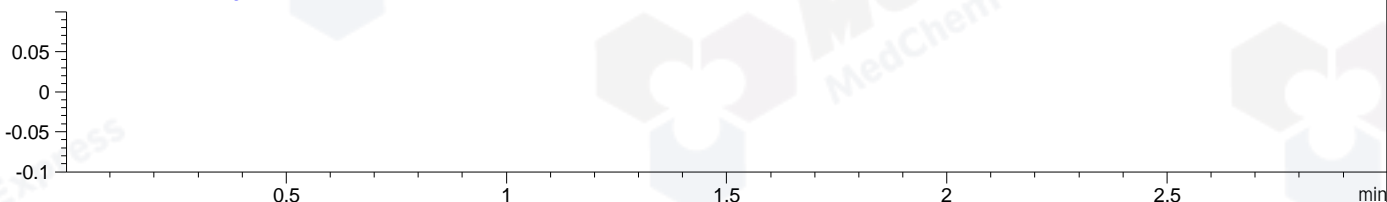
DAD1 B, Sig=254,4 Ref=off



MSD1 TIC, MS File ES-API, Pos, Scan, Frag: 70



Ion 1, MSD1 1, Target Mass 0 +H Positive, EIC=0.7:1.7



## Integration Results for DAD1 A, Sig=214,4 Ref=off

RetTim	Width	Area	Height	Area%	MS (+)
1.17	0.02	642.49	684.48	98.79	333
1.29	0.01	7.85	9.29	1.21	114

## Integration Results for DAD1 B, Sig=254,4 Ref=off

RetTim	Width	Area	Height	Area%	MS (+)
1.17	0.02	175.18	186.53	98.20	333
1.29	0.02	3.21	3.55	1.80	114

## Integration Results for MSD1 TIC, MS File

RetTim	Width	Area	Height	Area%	MS (+)
1.20	0.06	3238496.00	874249.44	100.00	333

Ret. Time: 1.20

<<<< POSITIVE SPECTRA >>>>

