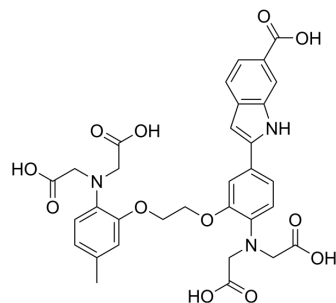


INDO 1

Cat. No.:	HY-D0121
CAS No.:	96314-96-4
Molecular Formula:	C ₃₂ H ₃₁ N ₃ O ₁₂
Molecular Weight:	649.6
Target:	Fluorescent Dye
Pathway:	Others
Storage:	Please store the product under the recommended conditions in the Certificate of Analysis.



BIOLOGICAL ACTIVITY

Description

INDO 1 is a fluorescent Ca²⁺ indicator, binds specifically to Ca²⁺ while emitting fluorescence, the maximum emission wavelength shifts from 485 nm before binding to 410 nm^[1].

REFERENCES

[1]. Grynkiewicz G, et al. A new generation of Ca²⁺ indicators with greatly improved fluorescence properties[J]. Journal of biological chemistry, 1985, 260(6): 3440-3450.

Caution: Product has not been fully validated for medical applications. For research use only.

Tel: 609-228-6898

Fax: 609-228-5909

E-mail: tech@MedChemExpress.com

Address: 1 Deer Park Dr, Suite Q, Monmouth Junction, NJ 08852, USA