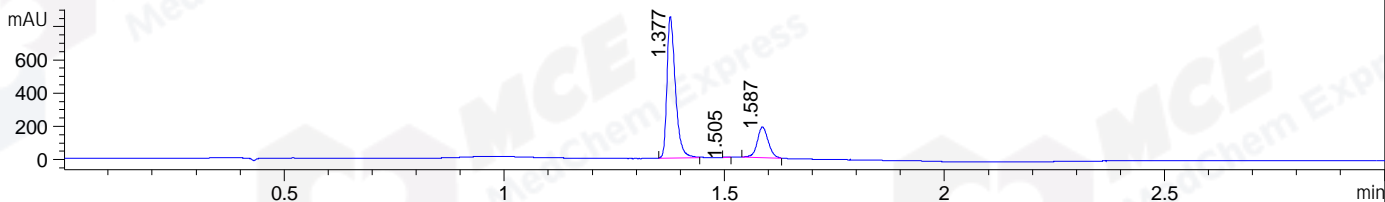
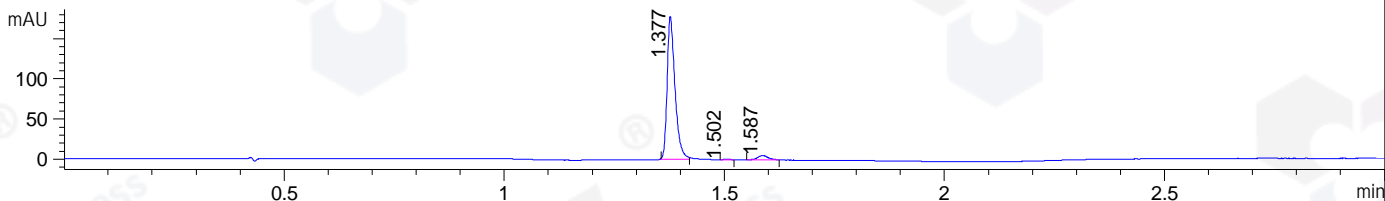


File ..\DATA\2019\20190222\543\CPK2019-221-20039.D Tgt Mass (CHM):
 Injection Date : 22 Feb 19 3:45 pm +0800 Seq. Line : 2
 Sample Name : CPK2019-221-20039 Location : P2-F-02
 Acq. Operator : LQ_1052 Inj : 1
 Spec. Reported : MS Integration Inj Volume : 1 ul
 Acq. Method : D:\Chem32\1\data\2019\20190222\543\1-POS-3MIN-1.M
 Analysis Method : D:\CHEM32\1\DATA\2019\20190222\543\1-POS-3MIN-1.M
 Catalog No : HY-D0150 Batch#20039
 Method Info : Mobile Phase: A: water(0.01%TFA) B:ACN(0.01%TFA)
 Gradient: 5% to 95%B within 1.3 min
 Flow Rate :1.8ml/min
 Column :SunFire C18, 4.6*50mm,3.5um A-RP-314
 Oven Temperature : 45

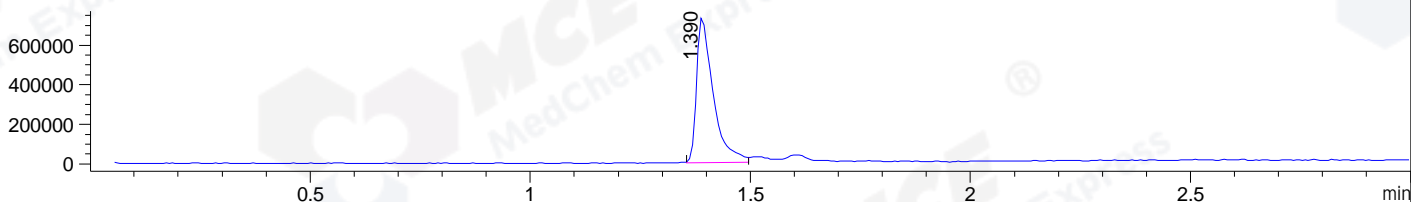
DAD1 B, Sig=214,4 Ref=off



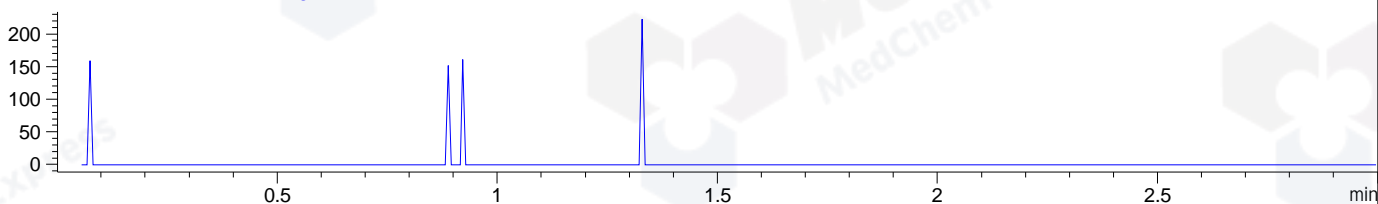
DAD1 C, Sig=254,4 Ref=off



MSD1 TIC, MS File ES-API, Pos, Scan, Frag: 70



Ion 477.6, MSD1 477.6, Target Mass 476.6 +H Positive, EIC=477.3:478.3



Integration Results for DAD1 B, Sig=214,4 Ref=off

RetTim	Width	Area	Height	Area%	MS (+)
1.38	0.02	1137.25	852.36	78.09	305
1.51	0.01	2.39	2.92	0.16	305
1.59	0.03	316.71	184.58	21.75	305

Integration Results for DAD1 C, Sig=254,4 Ref=off

RetTim	Width	Area	Height	Area%	MS (+)
1.38	0.02	220.12	178.02	95.88	305
1.50	0.02	0.61	0.58	0.26	305
1.59	0.03	8.84	5.34	3.85	305

Integration Results for MSD1 TIC, MS File

RetTim	Width	Area	Height	Area%	MS (+)
1.39	0.04	1935101.75	739727.50	100.00	305

Ret. Time: 1.39

<<<< POSITIVE SPECTRA >>>>

ES-API Positive

