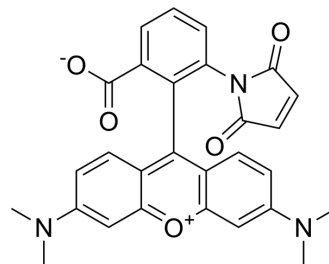


## Tetramethylrhodamine-6-maleimide

Cat. No.:	HY-D0152
CAS No.:	174568-68-4
Molecular Formula:	C <sub>28</sub> H <sub>23</sub> N <sub>3</sub> O <sub>5</sub>
Molecular Weight:	481.5
Target:	Fluorescent Dye
Pathway:	Others
Storage:	Please store the product under the recommended conditions in the Certificate of Analysis.



### BIOLOGICAL ACTIVITY

#### Description

Tetramethylrhodamine-6-maleimide is a fluorescent dye with a reactive sulfhydryl-specific moiety is covalently coupled to this cysteine. Tetramethylrhodamine-6-maleimide can be used as labels to detect local protein motions of the fully active Na<sup>+</sup>/K<sup>+</sup>-ATPase in real time<sup>[1][2]</sup>.

### REFERENCES

- [1]. Geibel S, et al. Conformational dynamics of the Na<sup>+</sup>/K<sup>+</sup>-ATPase probed by voltage clamp fluorometry. Proc Natl Acad Sci U S A. 2003 Feb 4;100(3):964-9.
- [2]. Loo DD, et al. Conformational changes couple Na<sup>+</sup> and glucose transport. Proc Natl Acad Sci U S A. 1998 Jun 23;95(13):7789-94.

**Caution: Product has not been fully validated for medical applications. For research use only.**

Tel: 609-228-6898

Fax: 609-228-5909

E-mail: tech@MedChemExpress.com

Address: 1 Deer Park Dr, Suite Q, Monmouth Junction, NJ 08852, USA