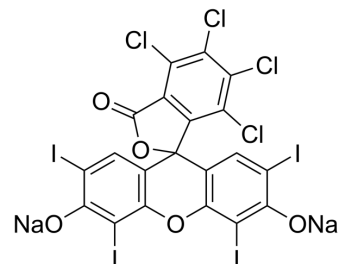


Rose Bengal sodium

Cat. No.:	HY-D0214
CAS No.:	632-69-9
Molecular Formula:	C ₂₀ H ₂ Cl ₄ I ₄ Na ₂ O ₅
Molecular Weight:	1017.64
Target:	Influenza Virus
Pathway:	Anti-infection
Storage:	4°C, protect from light, stored under nitrogen * In solvent : -80°C, 6 months; -20°C, 1 month (protect from light, stored under nitrogen)



SOLVENT & SOLUBILITY

In Vitro	H ₂ O : 31.25 mg/mL (30.71 mM; Need ultrasonic)				
		Solvent Concentration	Mass		
	Preparing Stock Solutions		1 mg	5 mg	10 mg
		1 mM	0.9827 mL	4.9133 mL	9.8267 mL
		5 mM	0.1965 mL	0.9827 mL	1.9653 mL
	10 mM	0.0983 mL	0.4913 mL	0.9827 mL	
Please refer to the solubility information to select the appropriate solvent.					
In Vivo	1. Add each solvent one by one: PBS Solubility: 25 mg/mL (24.57 mM); Clear solution; Need ultrasonic				

BIOLOGICAL ACTIVITY

Description	Rose Bengal sodium, a synthetic fluorescein derivative, and is a crimson-coloured dye with the principal component being 4,5,6,7-tetrachloro-2,4,5,7-tetraiodo fluorescein. Rose Bengal sodium has been widely used as an ophthalmic diagnostic agents, and can detect desiccated or damaged cells on the ocular surface. Rose Bengal sodium exhibits antiviral activities ^[1] [2].
-------------	--

CUSTOMER VALIDATION

- Research Square Print. 2022 May.

See more customer validations on www.MedChemExpress.com

REFERENCES

- [1]. Doughty MJ, et, al. Fluorescence characteristics of sodium fluorescein-rose bengal ophthalmic solution mixtures. Cont Lens Anterior Eye. 2014 Oct; 37(5): 358-62.
- [2]. Roat MI, et, al. The antiviral effects of rose bengal and fluorescein. Arch Ophthalmol. 1987 Oct; 105(10): 1415-7.
-

Caution: Product has not been fully validated for medical applications. For research use only.

Tel: 609-228-6898

Fax: 609-228-5909

E-mail: tech@MedChemExpress.com

Address: 1 Deer Park Dr, Suite Q, Monmouth Junction, NJ 08852, USA