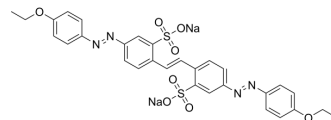


Chrysophenine

Cat. No.:	HY-D0247
CAS No.:	2870-32-8
Molecular Formula:	C ₃₀ H ₂₆ N ₄ Na ₂ O ₈ S ₂
Molecular Weight:	680.66
Target:	Fluorescent Dye
Pathway:	Others
Storage:	Please store the product under the recommended conditions in the Certificate of Analysis.



BIOLOGICAL ACTIVITY

Description
ChrysophenineCl Direct black 80 is an azo dye.

REFERENCES

[1]. Zhou S, et al. Titanium dioxide decorated natural cellulosic Juncus effusus fiber for highly efficient photodegradation towards dyes. Carbohydr Polym. 2020 Mar 15;232:115830.

Caution: Product has not been fully validated for medical applications. For research use only.

Tel: 609-228-6898

Fax: 609-228-5909

E-mail: tech@MedChemExpress.com

Address: 1 Deer Park Dr, Suite Q, Monmouth Junction, NJ 08852, USA