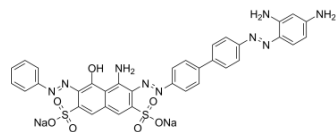


## Direct Black 38

<b>Cat. No.:</b>	HY-D0256		
<b>CAS No.:</b>	1937-37-7		
<b>Molecular Formula:</b>	C <sub>34</sub> H <sub>25</sub> N <sub>9</sub> Na <sub>2</sub> O <sub>7</sub> S <sub>2</sub>		
<b>Molecular Weight:</b>	781.73		
<b>Target:</b>	Others		
<b>Pathway:</b>	Others		
<b>Storage:</b>	Powder	-20°C	3 years
		4°C	2 years
	In solvent	-80°C	6 months
		-20°C	1 month



### SOLVENT & SOLUBILITY

#### In Vitro

H<sub>2</sub>O : 5 mg/mL (6.40 mM; Need ultrasonic)

Solvent	Mass	Concentration		
		1 mg	5 mg	10 mg
Preparing Stock Solutions	1 mM	1.2792 mL	6.3961 mL	12.7921 mL
	5 mM	0.2558 mL	1.2792 mL	2.5584 mL
	10 mM	---	---	---

Please refer to the solubility information to select the appropriate solvent.

### BIOLOGICAL ACTIVITY

#### Description

Direct Black 38 is an azo dye. Direct Black 38 induces unscheduled DNA synthesis in liver and micronucleus in bone marrow of rats in vivo<sup>[1]</sup>.

### REFERENCES

[1]. Beije B. Induction of unscheduled DNA synthesis in liver and micronucleus in bone marrow of rats exposed in vivo to the benzidine-derived azo dye, Direct Black 38. *Mutat Res.* 1987 Apr;187(4):227-34.

---

**Caution: Product has not been fully validated for medical applications. For research use only.**

Tel: 609-228-6898

Fax: 609-228-5909

E-mail: [tech@MedChemExpress.com](mailto:tech@MedChemExpress.com)

Address: 1 Deer Park Dr, Suite Q, Monmouth Junction, NJ 08852, USA