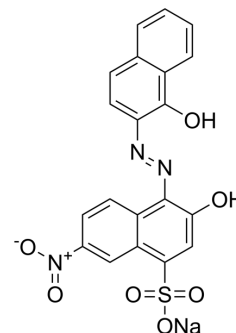


Eriochrome black T

Cat. No.:	HY-D0277
CAS No.:	1787-61-7
Molecular Formula:	C ₂₀ H ₁₂ N ₃ NaO ₇ S
Molecular Weight:	461.38
Target:	Fluorescent Dye
Pathway:	Others
Storage:	Please store the product under the recommended conditions in the Certificate of Analysis.



BIOLOGICAL ACTIVITY

Description

Eriochrome black T is a complex indicator used in complex titrations, e.g.

REFERENCES

[1]. Jarujamrus P, et al. Complexometric and argentometric titrations using thread-based analytical devices. *Talanta*. 2018 Jun 1;183:228-236.

Caution: Product has not been fully validated for medical applications. For research use only.

Tel: 609-228-6898

Fax: 609-228-5909

E-mail: tech@MedChemExpress.com

Address: 1 Deer Park Dr, Suite Q, Monmouth Junction, NJ 08852, USA