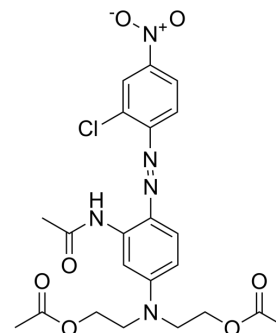


## Disperse red 167:1

Cat. No.:	HY-D0316
CAS No.:	1533-78-4
Molecular Formula:	C <sub>22</sub> H <sub>24</sub> ClN <sub>5</sub> O <sub>7</sub>
Molecular Weight:	505.91
Target:	Fluorescent Dye
Pathway:	Others
Storage:	Please store the product under the recommended conditions in the Certificate of Analysis.



### BIOLOGICAL ACTIVITY

#### Description

Disperse red 167:1 is a red dye derived from anthraquinone. It is used in plastics, textiles and cosmetics.

### REFERENCES

[1]. Jaskot RH, et al. Toxicity of an anthraquinone violet dye mixture following inhalation exposure, intratracheal instillation, or gavage. *Fundam Appl Toxicol.* 1994 Jan;22(1):103-12.

**Caution: Product has not been fully validated for medical applications. For research use only.**

Tel: 609-228-6898

Fax: 609-228-5909

E-mail: [tech@MedChemExpress.com](mailto:tech@MedChemExpress.com)

Address: 1 Deer Park Dr, Suite Q, Monmouth Junction, NJ 08852, USA