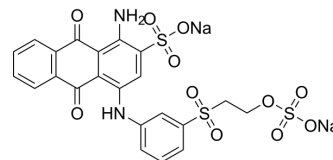


## Reactive Blue 19

Cat. No.:	HY-D0331
CAS No.:	2580-78-1
Molecular Formula:	C <sub>22</sub> H <sub>16</sub> N <sub>2</sub> Na <sub>2</sub> O <sub>11</sub> S <sub>3</sub>
Molecular Weight:	626.54
Target:	Fluorescent Dye
Pathway:	Others
Storage:	Please store the product under the recommended conditions in the Certificate of Analysis.



### BIOLOGICAL ACTIVITY

#### Description

Reactive Blue 19 is an anthraquinone dye used in the textile industry as a starting material to produce polymeric dye<sup>[1]</sup>.

### REFERENCES

[1]. Jawad AH, et al. Statistical optimization and modeling for color removal and COD reduction of reactive blue 19 dye by mesoporous chitosan-epichlorohydrin/kaolin clay composite. *Int J Biol Macromol.* 2020;164:4218-4230.

**Caution: Product has not been fully validated for medical applications. For research use only.**

Tel: 609-228-6898

Fax: 609-228-5909

E-mail: tech@MedChemExpress.com

Address: 1 Deer Park Dr, Suite Q, Monmouth Junction, NJ 08852, USA