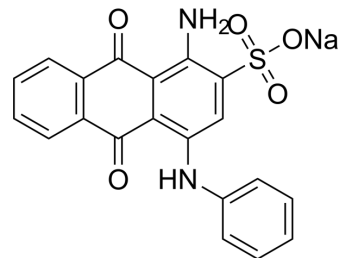


## C.I. Acid blue 25

Cat. No.:	HY-D0424
CAS No.:	6408-78-2
Molecular Formula:	C <sub>20</sub> H <sub>13</sub> N <sub>2</sub> NaO <sub>5</sub> S
Molecular Weight:	416.38
Target:	Fluorescent Dye
Pathway:	Others
Storage:	-20°C, sealed storage, away from moisture * In solvent : -80°C, 6 months; -20°C, 1 month (sealed storage, away from moisture)



### BIOLOGICAL ACTIVITY

#### Description

C.I. Acid blue 25 is an acidic blue dye that can be adsorbed and removed by bentone.

### REFERENCES

[1]. Baskaralingam P, Pulikesi M, Elango D, et al. Adsorption of acid dye onto organobentonite[J]. Journal of hazardous materials, 2006, 128(2-3): 138-144.

**Caution: Product has not been fully validated for medical applications. For research use only.**

Tel: 609-228-6898

Fax: 609-228-5909

E-mail: tech@MedChemExpress.com

Address: 1 Deer Park Dr, Suite Q, Monmouth Junction, NJ 08852, USA