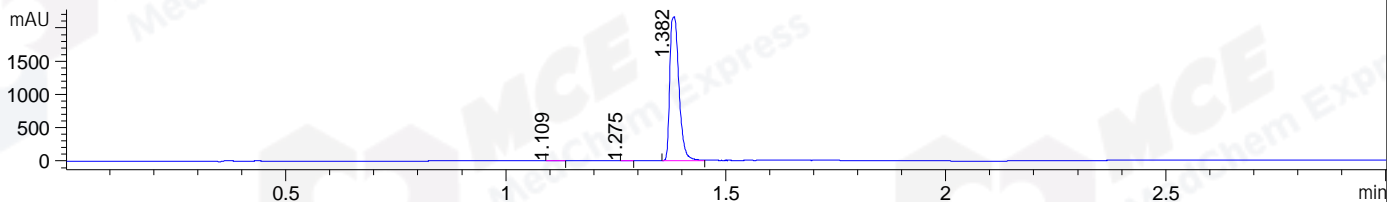
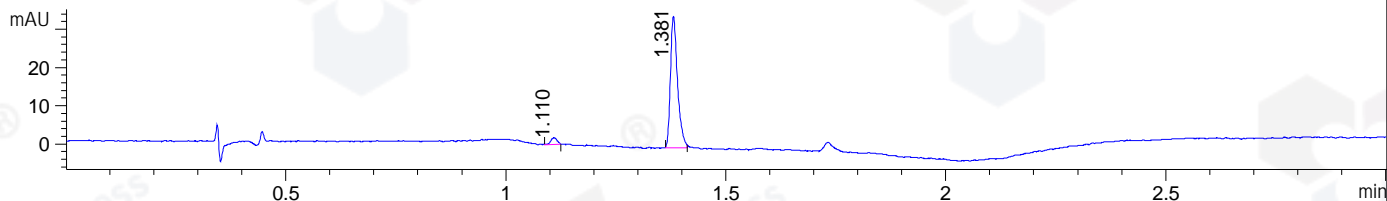


File ..\DATA\2019\20190611\583\BIZ2019-610-WYQ20.D Tgt Mass (CHM):
 Injection Date : 11 Jun 19 2:08 pm +0800 Seq. Line : 73
 Sample Name : BIZ2019-610-WYQ20 Location : P2-C-04
 Acq. Operator : ZJ_1432 Inj : 1
 Spec. Reported : MS Integration Inj Volume : 1 ul
 Acq. Method : D:\Chem32\1\data\2019\20190611\583\1-POS-3MIN.M
 Analysis Method : D:\CHEM32\1\DATA\2019\20190611\583\1-POS-3MIN.M
 Catalog No : HY-D0843 Batch#42385
 Method Info : Mobile Phase: A: water(0.01%TFA) B:ACN(0.01%TFA)
 Gradient: 5% to 95%B within 1.3 min
 Flow Rate :1.8ml/min
 Column :SunFire C18, 4.6*50mm,3.5um A-RP-433
 Oven Temperature : 45□

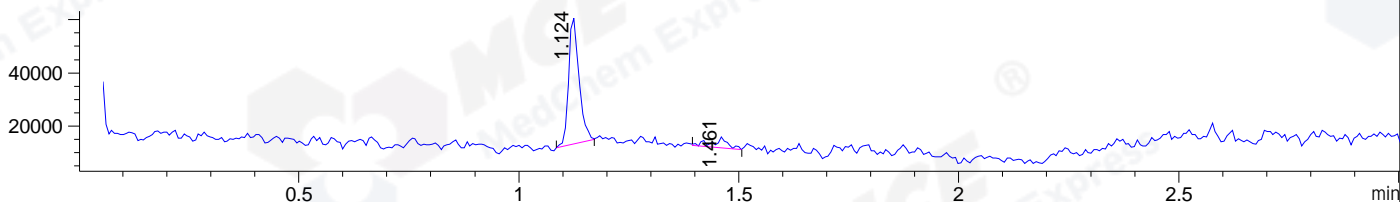
DAD1 B, Sig=214,4 Ref=off



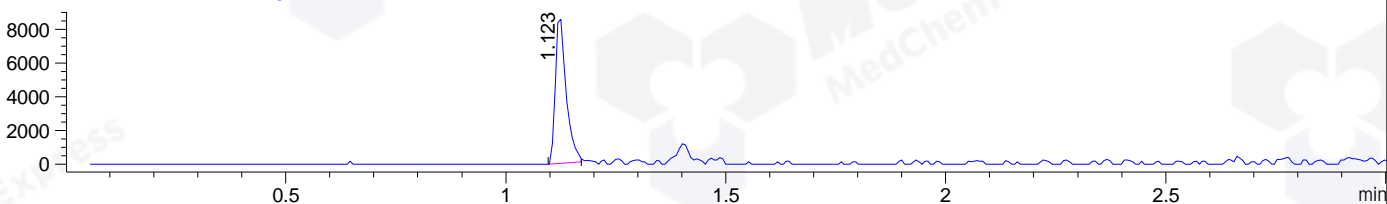
DAD1 C, Sig=254,4 Ref=off



MSD1 TIC, MS File ES-API, Pos, Scan, Frag: 70



Ion 126, MSD1 126, Target Mass 125 +H Positive, EIC=125.7:126.7



Integration Results for DAD1 B, Sig=214,4 Ref=off

RetTim	Width	Area	Height	Area%	MS (+)
1.11	0.02	6.87	5.71	0.22	158
1.28	0.02	3.35	3.36	0.11	157
1.38	0.02	3112.48	2163.88	99.67	157

Integration Results for DAD1 C, Sig=254,4 Ref=off

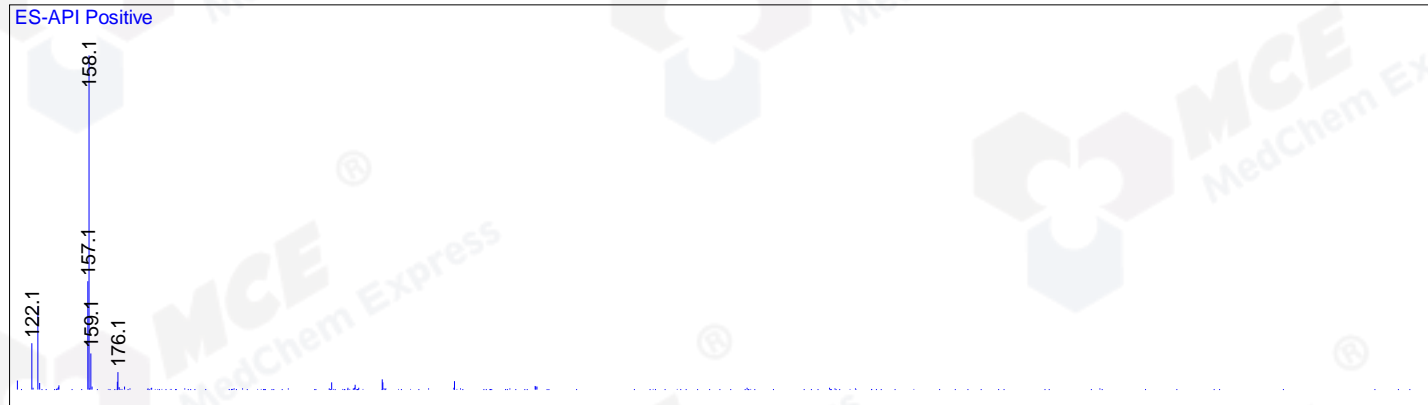
RetTim	Width	Area	Height	Area%	MS (+)
1.11	0.02	1.78	1.75	4.41	158
1.38	0.02	38.60	34.42	95.59	157

Integration Results for MSD1 TIC, MS File

RetTim	Width	Area	Height	Area%	MS (+)
1.12	0.02	78534.55	48030.73	89.02	158
1.46	0.04	9687.00	4254.10	10.98	157

Ret. Time: 1.12

<<<< POSITIVE SPECTRA >>>>



Ret. Time: 1.46

