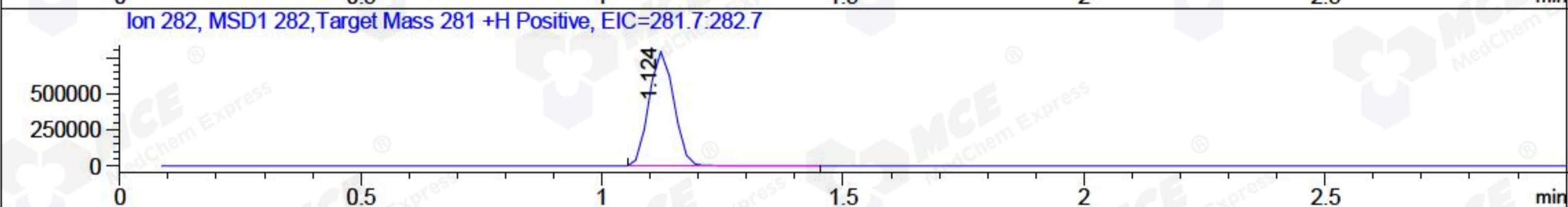
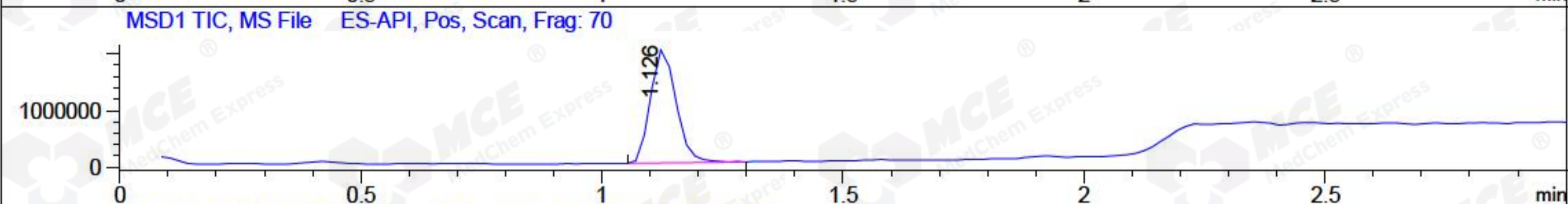
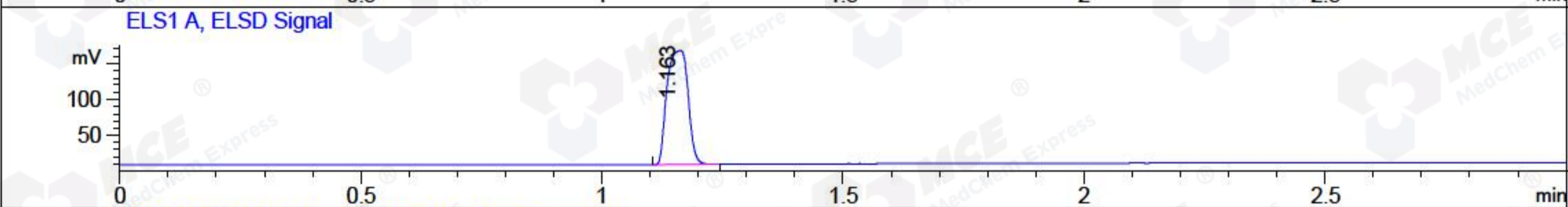
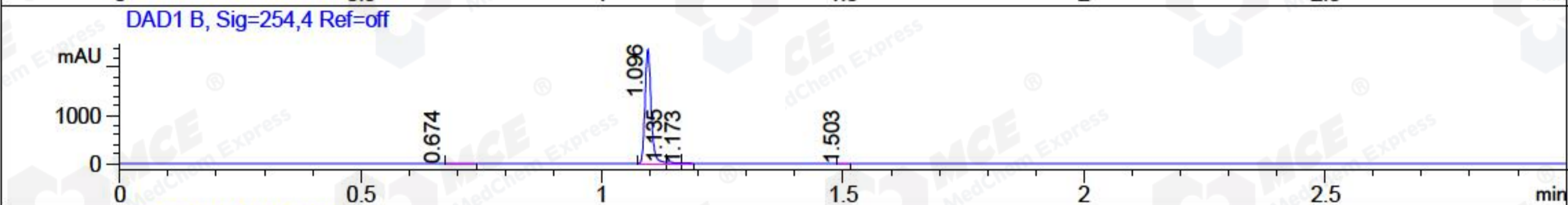
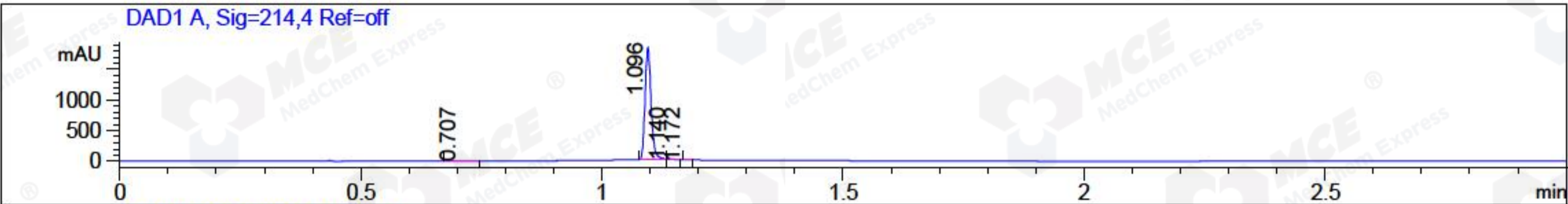


File ..ata\20171108\20171108-2\BIZ2017-N08-WYQ27.D Tgt Mass (CHM):
 Injection Date : 8 Nov 17 8:03 pm +0800 Seq. Line : 51
 Sample Name : BIZ2017-N08-WYQ27 Location : P2-D-03
 Acq. Operator : SYSTEM Inj : 1
 Spec. Reported : MS Integration Inj Volume : 1 ul
 Acq. Method : D:\LCMS03\Data\20171108\20171108-2\1-POS-3MIN.M
 Analysis Method : D:\LCMS03\Data\20171108\20171108-2\1-POS-3MIN.M
 Catalog No : HY-D0936 Batch#27136
 Method Info : Mobile Phase: A: water(0.01%TFA) B:ACN(0.01%TFA)
 Gradient: 5% to 95%B within 1.3 min
 Flow Rate :1.8ml/min
 Column :SunFire C18, 4.6*50mm,3.5um A-RP-186
 Oven Temperature : 45C



Integration Results for DAD1 A, Sig=214,4 Ref=off

RetTim	Width	Area	Height	Area%	MS (+)
0.71	0.03	2.30	1.19	0.14	189
1.10	0.01	1617.24	1842.93	98.87	282
1.14	0.02	15.77	15.93	0.96	282
1.17	0.01	0.42	0.48	0.03	160

Integration Results for DAD1 B, Sig=254,4 Ref=off

RetTim	Width	Area	Height	Area%	MS (+)
0.67	0.04	4.36	0.00	0.21	189
1.10	0.01	2102.10	2383.30	98.79	282
1.14	0.01	19.14	19.57	0.90	282
1.17	0.02	2.03	2.09	0.10	282
1.50	0.02	0.15	0.13	0.01	242

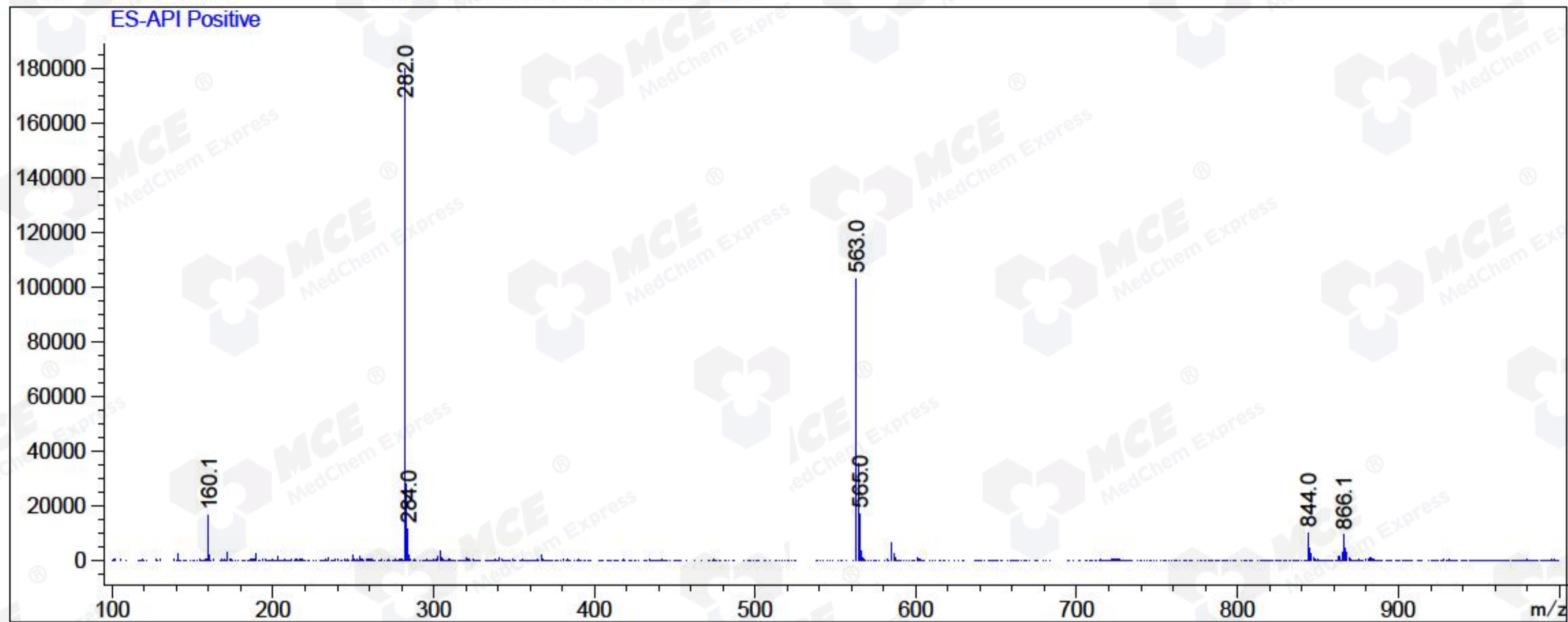
Integration Results for MSD1 TIC, MS File

RetTim	Width	Area	Height	Area%	MS (+)
--------	-------	------	--------	-------	--------

1.13 0.06 7406741.50 2010546.00 100.00 282

Ret. Time: 1.13

<<<< POSITIVE SPECTRA >>>>



*** End of Report ***