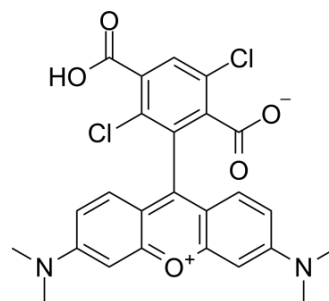


## 1,4-Dichloro 6-carboxytetramethylrhodamine

Cat. No.:	HY-D1043
CAS No.:	407581-83-3
Molecular Formula:	C <sub>25</sub> H <sub>20</sub> Cl <sub>2</sub> N <sub>2</sub> O <sub>5</sub>
Molecular Weight:	499.34
Target:	Others
Pathway:	Others
Storage:	Please store the product under the recommended conditions in the COA.



### BIOLOGICAL ACTIVITY

Description	1,4-Dichloro 6-carboxytetramethylrhodamine is a fluorescence labeling agent (Ex=541 nm, Em=568 nm).
-------------	---

**Caution: Product has not been fully validated for medical applications. For research use only.**

Tel: 609-228-6898

Fax: 609-228-5909

E-mail: [tech@MedChemExpress.com](mailto:tech@MedChemExpress.com)

Address: 1 Deer Park Dr, Suite Q, Monmouth Junction, NJ 08852, USA