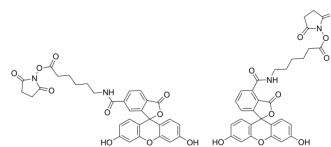


## 5(6)-SFX ,SE

Cat. No.:	HY-D1109
CAS No.:	114616-31-8
Molecular Formula:	C <sub>62</sub> H <sub>52</sub> N <sub>4</sub> O <sub>20</sub>
Molecular Weight:	586.54
Target:	Fluorescent Dye
Pathway:	Others
Storage:	-20°C, sealed storage, away from moisture and light * In solvent : -80°C, 6 months; -20°C, 1 month (sealed storage, away from moisture and light)



### BIOLOGICAL ACTIVITY

#### Description

5(6)-SFX ,SE (Compound SFX-SE) is a fluorescent dye for labeling primary amines and nascent proteins<sup>[1][2]</sup>.

### REFERENCES

[1]. Kenneth J, et al. Methods For The Detection, Analysis And Isolation Of Nascent Proteins. US20110250609.

[2]. Ito K, et al. Artificial human Met agonists based on macrocycle scaffolds. Nat Commun. 2015 Mar 11;6:6373.

**Caution: Product has not been fully validated for medical applications. For research use only.**

Tel: 609-228-6898

Fax: 609-228-5909

E-mail: tech@MedChemExpress.com

Address: 1 Deer Park Dr, Suite Q, Monmouth Junction, NJ 08852, USA