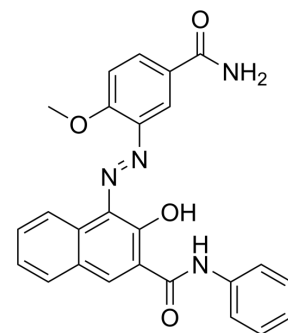


## Pigment Red 245

|                    |   |
|--------------------|---|
| Cat. No.:          | HY-D1201  |
| CAS No.:           | 68016-05-7  |
| Molecular Formula: | C <sub>25</sub> H <sub>20</sub> N <sub>4</sub> O <sub>4</sub>                             |
| Molecular Weight:  | 440.45  |
| Target:            | Fluorescent Dye   |
| Pathway:           | Others  |
| Storage:           | Please store the product under the recommended conditions in the Certificate of Analysis. |



### BIOLOGICAL ACTIVITY

#### Description

Pigment Red 245 is a commonly used commercial dye for bulk coloring of plastics and synthetic fibers and for surface coatings such as paints and inks.

### REFERENCES

[1]. Curry C J, Rendle D F, Rogers A. Pigment analysis in the forensic examination of paints. I. Pigment analysis by x-ray powder diffraction[J]. Journal of the Forensic Science Society, 1982, 22(2): 173-177.

**Caution: Product has not been fully validated for medical applications. For research use only.**

Tel: 609-228-6898

Fax: 609-228-5909

E-mail: tech@MedChemExpress.com

Address: 1 Deer Park Dr, Suite Q, Monmouth Junction, NJ 08852, USA