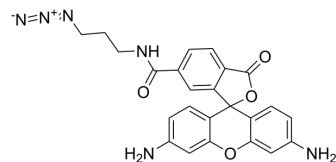


R110 azide, 6-isomer

Cat. No.:	HY-D1311
CAS No.:	1622395-29-2
Molecular Formula:	C ₂₄ H ₂₀ N ₆ O ₄
Molecular Weight:	456.45
Target:	Fluorescent Dye
Pathway:	Others
Storage:	Please store the product under the recommended conditions in the Certificate of Analysis.



BIOLOGICAL ACTIVITY

Description

R110 azide, 6-isomer is an isomer of rhodamine dye with an azide group that labels DNA fragments. It enables visualization of the results of capillary electrophoresis genotyping experiments and gel shift experiments.

REFERENCES

[1]. Khan H A. The effect of DNA labeling with the fluorescent dyes R110 and R6G on genotype analysis using capillary electrophoresis[J]. Cellular & molecular biology letters, 2005, 10(2): 247-253.

Caution: Product has not been fully validated for medical applications. For research use only.

Tel: 609-228-6898

Fax: 609-228-5909

E-mail: tech@MedChemExpress.com

Address: 1 Deer Park Dr, Suite Q, Monmouth Junction, NJ 08852, USA