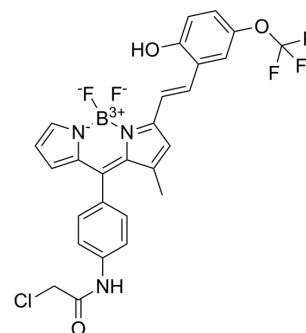


ER Thermo Yellow

Cat. No.:	HY-D1422
CAS No.:	1445108-32-6
Molecular Formula:	C ₂₇ H ₂₀ BClF ₅ N ₃ O ₃
Molecular Weight:	575.72
Target:	Fluorescent Dye
Pathway:	Others
Storage:	Please store the product under the recommended conditions in the Certificate of Analysis.



BIOLOGICAL ACTIVITY

Description	ER Thermo Yellow is an endoplasmic reticulum-targeted temperature-visible fluorescent probe with high sensitivity (3.9%/°C).
--------------------	--

REFERENCES

[1]. Arai S, et al. A molecular fluorescent probe for targeted visualization of temperature at the endoplasmic reticulum. *Sci Rep.* 2014 Oct 21;4:6701.

Caution: Product has not been fully validated for medical applications. For research use only.

Tel: 609-228-6898

Fax: 609-228-5909

E-mail: tech@MedChemExpress.com

Address: 1 Deer Park Dr, Suite Q, Monmouth Junction, NJ 08852, USA