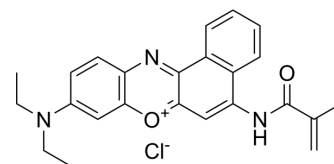


Nile Blue Methacrylamide

Cat. No.:	HY-D1463
CAS No.:	699018-10-5
Molecular Formula:	C ₂₄ H ₂₄ ClN ₃ O ₂
Molecular Weight:	421.92
Target:	Fluorescent Dye
Pathway:	Others
Storage:	Please store the product under the recommended conditions in the Certificate of Analysis.



BIOLOGICAL ACTIVITY

Description

Nile Blue Methacrylamide is a Nile Blue-based nanosized pH sensor that can be used for simultaneous far-red and near-infrared live bioimaging^[1].

REFERENCES

[1]. Jeppe Madsen, et al. Nile Blue-based nanosized pH sensors for simultaneous far-red and near-infrared live bioimaging. *J Am Chem Soc.* 2013 Oct 2;135(39):14863-70.

Caution: Product has not been fully validated for medical applications. For research use only.

Tel: 609-228-6898

Fax: 609-228-5909

E-mail: tech@MedChemExpress.com

Address: 1 Deer Park Dr, Suite Q, Monmouth Junction, NJ 08852, USA