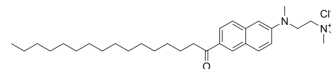


## Patman

Cat. No.:	HY-D1487
CAS No.:	87393-54-2
Molecular Formula:	C <sub>32</sub> H <sub>53</sub> ClN <sub>2</sub> O
Molecular Weight:	517.23
Target:	Fluorescent Dye
Pathway:	Others
Storage:	Please store the product under the recommended conditions in the Certificate of Analysis.



### BIOLOGICAL ACTIVITY

Description
Patman is a polarity sensitive dye <sup>[1]</sup> .

### REFERENCES

[1]. Hutterer R, et al. Binding of prothrombin and its fragment 1 to phospholipid membranes studied by the solvent relaxation technique. *Biochim Biophys Acta*. 1998 Nov 11;1414(1-2):155-64.

**Caution: Product has not been fully validated for medical applications. For research use only.**

Tel: 609-228-6898

Fax: 609-228-5909

E-mail: tech@MedChemExpress.com

Address: 1 Deer Park Dr, Suite Q, Monmouth Junction, NJ 08852, USA