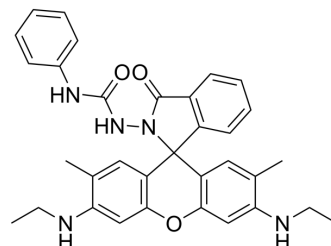


## 1-(3',6'-Bis(ethylamino)-2',7'-dimethyl-3-oxospiro[isoindoline-1,9'-xanthen]-2-yl)-3-phenylurea

<b>Cat. No.:</b>	HY-D1547
<b>CAS No.:</b>	957493-98-0
<b>Molecular Formula:</b>	C <sub>33</sub> H <sub>33</sub> N <sub>5</sub> O <sub>3</sub>
<b>Molecular Weight:</b>	547.65
<b>Target:</b>	Fluorescent Dye
<b>Pathway:</b>	Others
<b>Storage:</b>	Please store the product under the recommended conditions in the Certificate of Analysis.



### BIOLOGICAL ACTIVITY

<b>Description</b>	1-(3',6'-Bis(ethylamino)-2',7'-dimethyl-3-oxospiro[isoindoline-1,9'-xanthen]-2-yl)-3-phenylurea (compound 1a) can be used as a fast-responsive fluorescent gold ion probe for detection of gold ions in water and synthetic products <sup>[1]</sup> .
<b>In Vitro</b>	1-(3',6'-Bis(ethylamino)-2',7'-dimethyl-3-oxospiro[isoindoline-1,9'-xanthen]-2-yl)-3-phenylurea (compound 1a) exhibits no fluorescence in PBS (pH 7.4, containing 0.3% DMF) <sup>[1]</sup> . MCE has not independently confirmed the accuracy of these methods. They are for reference only.

### REFERENCES

[1]. Yuan L, et al. A fast-responsive fluorescent probe for detection of gold ions in water and synthetic products. Chem Commun (Camb). 2011 Apr 28;47(16):4703-5.

**Caution: Product has not been fully validated for medical applications. For research use only.**

Tel: 609-228-6898

Fax: 609-228-5909

E-mail: tech@MedChemExpress.com

Address: 1 Deer Park Dr, Suite Q, Monmouth Junction, NJ 08852, USA