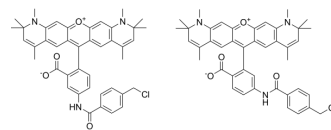


CytoTrace Red CMTPIX

Cat. No.:	HY-D1562
Molecular Formula:	C ₈₄ H ₈₀ Cl ₂ N ₆ O ₈
Molecular Weight:	1372.48
Target:	Fluorescent Dye
Pathway:	Others
Storage:	Please store the product under the recommended conditions in the Certificate of Analysis.



BIOLOGICAL ACTIVITY

Description	CytoTrace Red CMTPIX is a cell permeable long-term cell tracer (Ex=577 nm, Em=602 nm) ^[1] .
In Vitro	Guidelines (Following is our recommended protocol. This protocol only provides a guideline, and should be modified according to your specific needs) ^[1] . 1. Prepare the working solution of 5 μM, and incubate with cells for 30 min, protected from light. 2. Collect images by confocal microscopy with an excitation/emission wavelength of 577/602 nm. MCE has not independently confirmed the accuracy of these methods. They are for reference only.

REFERENCES

[1]. Bernd R Stab 2nd, et al. Mitochondrial Functional Changes Characterization in Young and Senescent Human Adipose Derived MSCs. Front Aging Neurosci. 2016 Dec 15;8:299.

Caution: Product has not been fully validated for medical applications. For research use only.

Tel: 609-228-6898

Fax: 609-228-5909

E-mail: tech@MedChemExpress.com

Address: 1 Deer Park Dr, Suite Q, Monmouth Junction, NJ 08852, USA