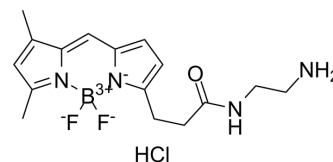


## BODIPY FL-EDA

Cat. No.:	HY-D1603
CAS No.:	209541-26-4
Molecular Formula:	C <sub>16</sub> H <sub>22</sub> BClF <sub>2</sub> N <sub>4</sub> O
Molecular Weight:	370.63
Target:	Fluorescent Dye
Pathway:	Others
Storage:	-20°C, protect from light * In solvent : -80°C, 6 months; -20°C, 1 month (protect from light)



### SOLVENT & SOLUBILITY

#### In Vitro

DMSO : 100 mg/mL (269.81 mM; Need ultrasonic)

Concentration	Solvent	Mass		
		1 mg	5 mg	10 mg
Preparing Stock Solutions	1 mM	2.6981 mL	13.4905 mL	26.9811 mL
	5 mM	0.5396 mL	2.6981 mL	5.3962 mL
	10 mM	0.2698 mL	1.3491 mL	2.6981 mL

Please refer to the solubility information to select the appropriate solvent.

### BIOLOGICAL ACTIVITY

#### Description

BODIPY FL-EDA is a fluorescent dye. BODIPY FL-EDA is an aliphatic-amine analog, and it can be coupled with aldehydes and ketones. BODIPY FL-EDA can be used for the detection of modified and normal deoxynucleotides and to determine DNA damage and genomic DNA methylation<sup>[1]</sup>.

### REFERENCES

[1]. Cornelius M, et al. Detection and separation of nucleoside-5'-monophosphates of DNA by conjugation with the fluorescent dye BODIPY and capillary electrophoresis with laser-induced fluorescence detection. *Electrophoresis*. 2005 Jun;26(13):2591-8.

**Caution: Product has not been fully validated for medical applications. For research use only.**

Tel: 609-228-6898

Fax: 609-228-5909

E-mail: tech@MedChemExpress.com

Address: 1 Deer Park Dr, Suite Q, Monmouth Junction, NJ 08852, USA