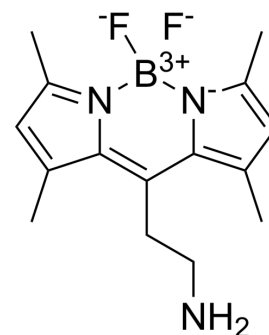


BODIPY FL Ethylamine

Cat. No.:	HY-D1604
CAS No.:	1229571-00-9
Molecular Formula:	C ₁₅ H ₂₀ BF ₂ N ₃
Molecular Weight:	291.15
Target:	Fluorescent Dye
Pathway:	Others
Storage:	Please store the product under the recommended conditions in the Certificate of Analysis.



BIOLOGICAL ACTIVITY

Description

BODIPY FL Ethylamine is a fluorescent dye that reversibly reacts with aldehyde/ketone to yield a Schiff base. BODIPY FL Ethylamine can be reduced to form a stable amine derivative using sodium borohydride or sodium cyanoborohydride^[1].

REFERENCES

[1]. Köse M, et, al. Fluorescent-Labeled Selective Adenosine A2B Receptor Antagonist Enables Competition Binding Assay by Flow Cytometry. J Med Chem. 2018 May 24;61(10):4301-4316.

Caution: Product has not been fully validated for medical applications. For research use only.

Tel: 609-228-6898

Fax: 609-228-5909

E-mail: tech@MedChemExpress.com

Address: 1 Deer Park Dr, Suite Q, Monmouth Junction, NJ 08852, USA