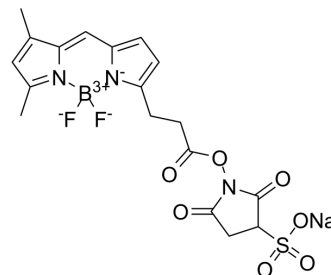


## BODIPY FL SSE

<b>Cat. No.:</b>	HY-D1607
<b>CAS No.:</b>	217190-17-5
<b>Molecular Formula:</b>	C <sub>18</sub> H <sub>17</sub> BF <sub>2</sub> N <sub>3</sub> NaO <sub>7</sub> S
<b>Molecular Weight:</b>	491.21
<b>Target:</b>	Others
<b>Pathway:</b>	Others
<b>Storage:</b>	Please store the product under the recommended conditions in the Certificate of Analysis.



## BIOLOGICAL ACTIVITY

<b>Description</b>	BODIPY FL SSE is a potent fluorescent dye. BODIPY FL SSE is used to label the primary amines (R-NH <sub>2</sub> ) of proteins, amine-modified oligonucleotides, and other amine-containing molecules. BODIPY FL SSE can reactive with primary amines on biomolecules to emit green fluorescence. ( $\lambda_{ex}=502$ nm, $\lambda_{em}=511$ nm) <sup>[1][2]</sup> .
<b>In Vitro</b>	<p>Guidelines (Following is our recommended protocol. This protocol only provides a guideline, and should be modified according to your specific needs).</p> <p>BODIPY FL SSE assay (to quantify GAPDH)<sup>[1]</sup>:</p> <ol style="list-style-type: none"> <li>1. Make a 2 mg/ mL stock of GAPDH (MW 37 kDa) in PBS (pH 7.4).</li> <li>2. Add 54 nM of BODIPY-FL-SSE to 1 mL of the 2 mg/ mL (54 <math>\mu</math>M) GAPDH solution. Incubate the mixture for 4 h on ice.</li> <li>3. Dialyze the reaction mixture against 500 ml of PBS, pH 7.4, in a 10,000 MW-cutoff dialysis cassette for 1 h at 4 °C. Change the buffer and dialyze again overnight. Change the dialysis buffer once more the following morning and dialyze further for 1 h.</li> <li>4. Run the dialyzed sample through a Zeba desalting column at 1000 g for 2 min.</li> <li>5. Analyze the BD-GAPDH spectrophotometrically in a quartz cuvette. Set the wavelength scan to 250-700 nm. Blank the instrument against PBS and add the BD-GAPDH to the cuvette.</li> </ol> <p>MCE has not independently confirmed the accuracy of these methods. They are for reference only.</p>

## REFERENCES

- [1]. Hill BG, et, al. Methods for the determination and quantification of the reactive thiol proteome. *Free Radic Biol Med.* 2009 Sep 15;47(6):675-83.
- [2]. Gite S, et, al. Ultrasensitive fluorescence-based detection of nascent proteins in gels. *Anal Biochem.* 2000 Mar 15;279(2):218-25.

**Caution: Product has not been fully validated for medical applications. For research use only.**

Tel: 609-228-6898

Fax: 609-228-5909

E-mail: tech@MedChemExpress.com

Address: 1 Deer Park Dr, Suite Q, Monmouth Junction, NJ 08852, USA