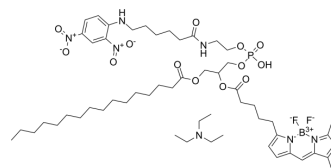


PED6

| | |
|--------------------|---|
| Cat. No.: | HY-D1698 |
| CAS No.: | 388061-84-5 |
| Molecular Formula: | C ₅₅ H ₈₉ BF ₂ N ₇ O ₁₃ P |
| Molecular Weight: | 1136.12 |
| Target: | Fluorescent Dye |
| Pathway: | Others |
| Storage: | Please store the product under the recommended conditions in the Certificate of Analysis. |



BIOLOGICAL ACTIVITY

| | |
|-------------|---|
| Description | PED6 is a PLA ₂ substrate fluorescent probe (EX/EM=488/530 nm) that is a BODIFY-labeled fluorescent phosphatidylethanolamine analogue. PED6 can be used for detection of phospholipase A ₂ ^[1] . |
|-------------|---|

REFERENCES

- [1]. Pohjala LL, et al. Interference by bovine serum albumin in PED6 based phospholipase A₂ screening assays. Pharmazie. 2012 Nov;67(11):954-5.
- [2]. Benson MA, Schmalzer KM, Frank DW. A sensitive fluorescence-based assay for the detection of ExoU-mediated PLA(2) activity. Clin Chim Acta. 2010;411(3-4):190-197.
- [3]. Lasch J, Willhardt I, Kinder D, Sauer H, Smesny S. Fluorometric assays of phospholipase A₂ activity with three different substrates in biological samples of patients with schizophrenia. Clin Chem Lab Med. 2003;41(7):908-914.

Caution: Product has not been fully validated for medical applications. For research use only.

Tel: 609-228-6898

Fax: 609-228-5909

E-mail: tech@MedChemExpress.com

Address: 1 Deer Park Dr, Suite Q, Monmouth Junction, NJ 08852, USA