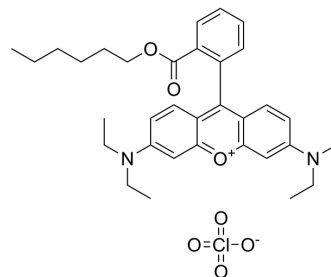


Rhodamine B hexyl ester perchlorate

Cat. No.:	HY-D1748
CAS No.:	877933-92-1
Molecular Formula:	C ₃₄ H ₄₃ ClN ₂ O ₇
Molecular Weight:	627.17
Target:	Fluorescent Dye
Pathway:	Others
Storage:	Please store the product under the recommended conditions in the Certificate of Analysis.



BIOLOGICAL ACTIVITY

Description

Rhodamine B hexyl ester perchlorate is a cell-permeant, orange-fluorescent dye for mitochondria.

Caution: Product has not been fully validated for medical applications. For research use only.

Tel: 609-228-6898

Fax: 609-228-5909

E-mail: tech@MedChemExpress.com

Address: 1 Deer Park Dr, Suite Q, Monmouth Junction, NJ 08852, USA