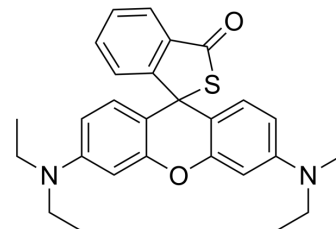


## Rhodamine B thiolactone

Cat. No.:	HY-D1750
CAS No.:	111883-10-4
Molecular Formula:	C <sub>28</sub> H <sub>30</sub> N <sub>2</sub> O <sub>2</sub> S
Molecular Weight:	458.62
Target:	Fluorescent Dye
Pathway:	Others
Storage:	Please store the product under the recommended conditions in the Certificate of Analysis.



### BIOLOGICAL ACTIVITY

#### Description

Rhodamine B thiolactone is a high-sensitive Hg<sup>2+</sup> indicator used for measuring Hg<sup>2+</sup> concentration.

**Caution: Product has not been fully validated for medical applications. For research use only.**

Tel: 609-228-6898

Fax: 609-228-5909

E-mail: tech@MedChemExpress.com

Address: 1 Deer Park Dr, Suite Q, Monmouth Junction, NJ 08852, USA