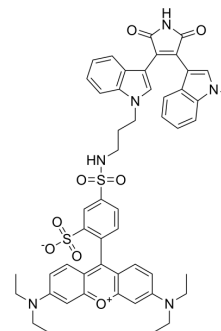


RIM-1

Cat. No.:	HY-D1751
CAS No.:	150206-04-5
Molecular Formula:	C ₅₁ H ₅₀ N ₆ O ₈ S ₂
Molecular Weight:	939.11
Target:	PKC; Fluorescent Dye
Pathway:	Epigenetics; TGF-beta/Smad; Others
Storage:	Please store the product under the recommended conditions in the Certificate of Analysis.



BIOLOGICAL ACTIVITY

Description

RIM-1 is a fluorescent probe for protein kinase C (PKC) that can be used to visualize the distribution of PKC in cells.

Caution: Product has not been fully validated for medical applications. For research use only.

Tel: 609-228-6898

Fax: 609-228-5909

E-mail: tech@MedChemExpress.com

Address: 1 Deer Park Dr, Suite Q, Monmouth Junction, NJ 08852, USA