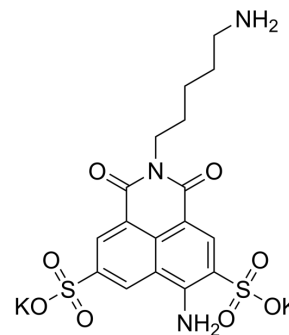


## Lucifer yellow cadaverine

Cat. No.:	HY-D1753
CAS No.:	149733-79-9
Molecular Formula:	C <sub>17</sub> H <sub>17</sub> K <sub>2</sub> N <sub>3</sub> O <sub>8</sub> S <sub>2</sub>
Molecular Weight:	533.66
Target:	Fluorescent Dye
Pathway:	Others
Storage:	Please store the product under the recommended conditions in the Certificate of Analysis.



### BIOLOGICAL ACTIVITY

Description	Lucifer yellow cadaverine (LYC) can be used as a cell tracer.
-------------	---

**Caution: Product has not been fully validated for medical applications. For research use only.**

Tel: 609-228-6898

Fax: 609-228-5909

E-mail: [tech@MedChemExpress.com](mailto:tech@MedChemExpress.com)

Address: 1 Deer Park Dr, Suite Q, Monmouth Junction, NJ 08852, USA