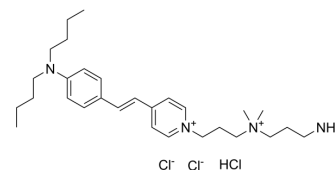


## FM 1-43FX

Cat. No.:	HY-D1765
CAS No.:	1415018-97-1
Molecular Formula:	C <sub>29</sub> H <sub>49</sub> Cl <sub>3</sub> N <sub>4</sub>
Molecular Weight:	560.09
Target:	Fluorescent Dye
Pathway:	Others
Storage:	Please store the product under the recommended conditions in the Certificate of Analysis.



## BIOLOGICAL ACTIVITY

### Description

FM 1-43FX is a fluorescent membrane probe that contains an aliphatic amine which can react with aldehyde-based fixatives.

**Caution: Product has not been fully validated for medical applications. For research use only.**

Tel: 609-228-6898

Fax: 609-228-5909

E-mail: tech@MedChemExpress.com

Address: 1 Deer Park Dr, Suite Q, Monmouth Junction, NJ 08852, USA