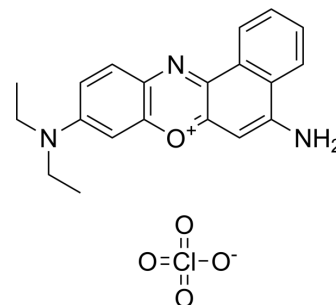


Nile Blue A perchlorate

Cat. No.:	HY-D1772
CAS No.:	53340-16-2
Molecular Formula:	C ₂₀ H ₂₀ ClN ₃ O ₅
Molecular Weight:	417.84
Target:	Fluorescent Dye
Pathway:	Others
Storage:	Please store the product under the recommended conditions in the Certificate of Analysis.



BIOLOGICAL ACTIVITY

Description

Nile Blue A perchlorate is a laser dye used for pulsed and CW operations.

Caution: Product has not been fully validated for medical applications. For research use only.

Tel: 609-228-6898

Fax: 609-228-5909

E-mail: tech@MedChemExpress.com

Address: 1 Deer Park Dr, Suite Q, Monmouth Junction, NJ 08852, USA