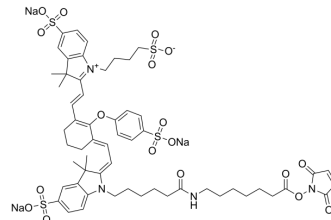


800CW maleimide

Cat. No.:	HY-D1869
Molecular Formula:	$C_{57}H_{65}N_4Na_3O_{18}S_4$
Molecular Weight:	1291.37
Target:	Fluorescent Dye
Pathway:	Others
Storage:	Please store the product under the recommended conditions in the Certificate of Analysis.



BIOLOGICAL ACTIVITY

Description

800CW maleimide is an infrared dye that can be used for labeling molecules that contain free sulfhydryl (-SH) groups (Ex: 778 nm; Em: 796 nm). 800CW maleimide binds to plasma proteins^[1].

REFERENCES

[1]. Matsuoka D, et al. Synthesis and evaluation of a novel near-infrared fluorescent probe based on succinimidyl-Cys-C(O)-Glu that targets prostate-specific membrane antigen for optical imaging. *Bioorg Med Chem Lett*. 2017 Nov 1;27(21):4876-4880.

Caution: Product has not been fully validated for medical applications. For research use only.

Tel: 609-228-6898

Fax: 609-228-5909

E-mail: tech@MedChemExpress.com

Address: 1 Deer Park Dr, Suite Q, Monmouth Junction, NJ 08852, USA