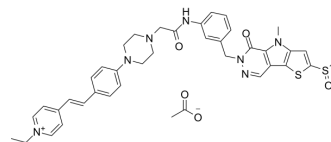


ZY-2

| | |
|--------------------|---|
| Cat. No.: | HY-D1876 |
| Molecular Formula: | C ₄₀ H ₄₃ N ₇ O ₅ S ₂ |
| Molecular Weight: | 765.94 |
| Target: | Fluorescent Dye |
| Pathway: | Others |
| Storage: | Please store the product under the recommended conditions in the Certificate of Analysis. |



SOLVENT & SOLUBILITY

In Vitro

DMSO : 100 mg/mL (130.56 mM; Need ultrasonic)

| | Solvent Concentration | Mass | 1 mg | 5 mg | 10 mg |
|------------------------------|--------------------------|------|-----------|-----------|------------|
| | | | | | |
| Preparing Stock Solutions | 1 mM | | 1.3056 mL | 6.5279 mL | 13.0559 mL |
| | 5 mM | | 0.2611 mL | 1.3056 mL | 2.6112 mL |
| | 10 mM | | 0.1306 mL | 0.6528 mL | 1.3056 mL |

Please refer to the solubility information to select the appropriate solvent.

BIOLOGICAL ACTIVITY

Description

ZY-2 is a specific fluorescent probe for pyruvate kinase M2 (PKM2). ZY-2 can image in PKM2-positive cells in a time- and concentration-dependent manner. ZY-2 can be used for the detection of cancer cells^[1].

REFERENCES

[1]. Zhang Y, et al. A responsive fluorescent probe for detecting and imaging pyruvate kinase M2 in live cells. Chem Commun (Camb). 2022, 58(45): 6494-6497.

Caution: Product has not been fully validated for medical applications. For research use only.

Tel: 609-228-6898

Fax: 609-228-5909

E-mail: tech@MedChemExpress.com

Address: 1 Deer Park Dr, Suite Q, Monmouth Junction, NJ 08852, USA