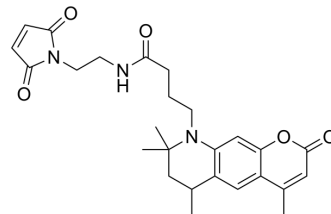


ATTO 390 maleimide

Cat. No.:	HY-D1918
CAS No.:	914203-50-2
Molecular Formula:	C ₂₆ H ₃₁ N ₃ O ₅
Molecular Weight:	465.54
Target:	Fluorescent Dye
Pathway:	Others
Storage:	Please store the product under the recommended conditions in the Certificate of Analysis.



BIOLOGICAL ACTIVITY

Description

ATTO 390 maleimide is a maleimide ester derivative of ATTO 390, which can be used to label proteins or antibodies. The maximum excitation/emission wavelength: 390/476 nm.

Caution: Product has not been fully validated for medical applications. For research use only.

Tel: 609-228-6898

Fax: 609-228-5909

E-mail: tech@MedChemExpress.com

Address: 1 Deer Park Dr, Suite Q, Monmouth Junction, NJ 08852, USA