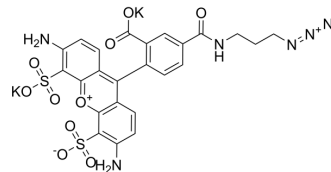


AF488 azide

Cat. No.:	HY-D2173
Molecular Formula:	C ₂₄ H ₁₈ K ₂ N ₆ O ₁₀ S ₂
Molecular Weight:	692.76
Target:	Fluorescent Dye
Pathway:	Others
Storage:	Please store the product under the recommended conditions in the Certificate of Analysis.



BIOLOGICAL ACTIVITY

Description

AF488 azide is a fluorescent dye that can be used to determine the reactivity of immobilized DIBO groups^[1].

REFERENCES

[1]. Ruff SM, et al. clickECM: Development of a cell-derived extracellular matrix with azide functionalities. *Acta Biomater.* 2017 Apr 1;52:159-170.

Caution: Product has not been fully validated for medical applications. For research use only.

Tel: 609-228-6898

Fax: 609-228-5909

E-mail: tech@MedChemExpress.com

Address: 1 Deer Park Dr, Suite Q, Monmouth Junction, NJ 08852, USA