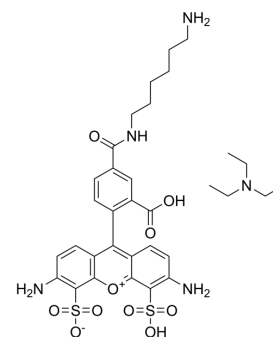


AF488 amine

Cat. No.:	HY-D2174
Molecular Formula:	C ₃₃ H ₄₃ N ₅ O ₁₀ S ₂
Molecular Weight:	733.85
Target:	Fluorescent Dye
Pathway:	Others
Storage:	Please store the product under the recommended conditions in the Certificate of Analysis.



BIOLOGICAL ACTIVITY

Description

AF488 amine is a bright, green-fluorescent dye used for labeling molecule such as antibodies^[1].

REFERENCES

[1]. L M Jungbauer, et al. Preparation of fluorescently-labeled amyloid-beta peptide assemblies: the effect of fluorophore conjugation on structure and function. J Mol Recognit. 2009 Sep-Oct;22(5):403-13.

Caution: Product has not been fully validated for medical applications. For research use only.

Tel: 609-228-6898

Fax: 609-228-5909

E-mail: tech@MedChemExpress.com

Address: 1 Deer Park Dr, Suite Q, Monmouth Junction, NJ 08852, USA