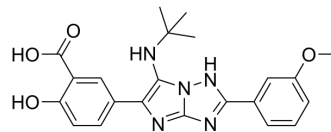


## SHP1-IN-1

Cat. No.:	HY-D2204
CAS No.:	2956720-62-8
Molecular Formula:	C <sub>22</sub> H <sub>23</sub> N <sub>5</sub> O <sub>4</sub>
Molecular Weight:	421.45
Target:	Phosphatase; Fluorescent Dye
Pathway:	Metabolic Enzyme/Protease; Others
Storage:	Please store the product under the recommended conditions in the Certificate of Analysis.



### BIOLOGICAL ACTIVITY

Description	SHP1-IN-1 (compound 5p) is a fluorescent probe for the protein tyrosine phosphatase SHP1 containing the Src homology 2 domain. SHP1-IN-1 has SHP1 inhibitory activity, selectivity for Fe <sup>3+</sup> ions and good fluorescence properties. SHP1-IN-1 exhibits aggregation post-quenching (ACQ) effect, good interference immunity and low detection limit (5.55 μM) <sup>[1]</sup> .
IC <sub>50</sub> & Target	SHP1 <sup>[1]</sup>

### REFERENCES

[1]. Yan X, et al. Novel imidazo[1,2,4] triazole derivatives: Synthesis, fluorescence, bioactivity for SHP1. Eur J Med Chem. 2024 Feb 5;265:116027.

**Caution: Product has not been fully validated for medical applications. For research use only.**

Tel: 609-228-6898

Fax: 609-228-5909

E-mail: tech@MedChemExpress.com

Address: 1 Deer Park Dr, Suite Q, Monmouth Junction, NJ 08852, USA