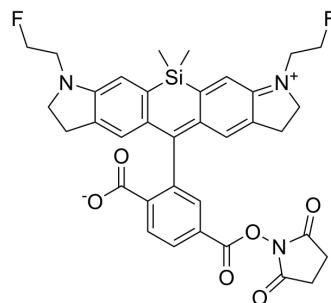


## SiR700-CH2F

Cat. No.:	HY-D2207
Molecular Formula:	C <sub>35</sub> H <sub>33</sub> F <sub>2</sub> N <sub>3</sub> O <sub>6</sub> Si
Molecular Weight:	657.74
Target:	Fluorescent Dye
Pathway:	Others
Storage:	Please store the product under the recommended conditions in the Certificate of Analysis.



### BIOLOGICAL ACTIVITY

#### Description

SiR700-CH2F, a near infrared silica-containing Rhodamine fluorophore, is a highly specific DNA probe (EX/Em= 680/702 nm) [1].

### REFERENCES

[1]. Thomas E McCann, et al. Activatable optical imaging with a silica-rhodamine based near infrared (SiR700) fluorophore: a comparison with cyanine based dyes. *Bioconjug Chem.* 2011 Dec 21;22(12):2531-8.

**Caution: Product has not been fully validated for medical applications. For research use only.**

Tel: 609-228-6898

Fax: 609-228-5909

E-mail: tech@MedChemExpress.com

Address: 1 Deer Park Dr, Suite Q, Monmouth Junction, NJ 08852, USA