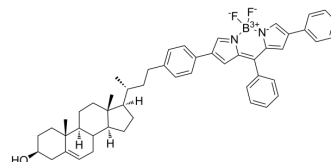


BODIPY-cholesterol conjugate-2

Cat. No.:	HY-D2262
CAS No.:	1638745-26-2
Molecular Formula:	C ₅₀ H ₅₅ BF ₂ N ₂ O
Molecular Weight:	748.79
Target:	Fluorescent Dye
Pathway:	Others
Storage:	Please store the product under the recommended conditions in the Certificate of Analysis.



BIOLOGICAL ACTIVITY

Description

BODIPY-cholesterol conjugate-2 (compound 6) is a BODIPY-cholesterol conjugate. BODIPY-cholesterol conjugate-2 is a useful probe for simultaneous visualization of intracellular cholesterol pools and for monitoring cholesterol efflux from cells to extracellular acceptors. (λ_{ex} =589 nm, λ_{em} =638 nm)^[1].

REFERENCES

[1]. Zheng Liu, et al. Synthesis of cholesterol analogues bearing BODIPY fluorophores by Suzuki or Liebeskind-Srogl cross-coupling and evaluation of their potential for visualization of cholesterol pools. *Chembiochem*. 2014 Sep 22;15(14):2087-96.

Caution: Product has not been fully validated for medical applications. For research use only.

Tel: 609-228-6898

Fax: 609-228-5909

E-mail: tech@MedChemExpress.com

Address: 1 Deer Park Dr, Suite Q, Monmouth Junction, NJ 08852, USA