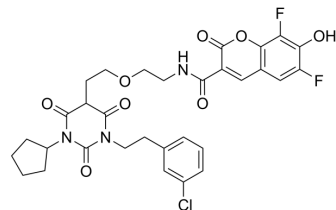


## FluoBar1

<b>Cat. No.:</b>	HY-D2266
<b>Molecular Formula:</b>	C <sub>31</sub> H <sub>30</sub> ClF <sub>2</sub> N <sub>3</sub> O <sub>8</sub>
<b>Molecular Weight:</b>	646.04
<b>Target:</b>	Fluorescent Dye
<b>Pathway:</b>	Others
<b>Storage:</b>	Please store the product under the recommended conditions in the Certificate of Analysis.



### BIOLOGICAL ACTIVITY

#### Description

FluoBar1 is an imaging fluorescence probe modified by a barbiturate ligand with fluorescent coumarin. FluoBar1 can monitor L-type voltage-gated calcium channels (LTCC) in living cells in real time for the study of neurological diseases [1].

### REFERENCES

[1]. Tabatabaee MS, et al. Design of an Imaging Probe to Monitor Real-Time Redistribution of L-type Voltage-Gated Calcium Channels in Astrocytic Glutamate Signaling. Mol Imaging Biol. 2021 Jun;23(3):407-416.

**Caution: Product has not been fully validated for medical applications. For research use only.**

Tel: 609-228-6898

Fax: 609-228-5909

E-mail: tech@MedChemExpress.com

Address: 1 Deer Park Dr, Suite Q, Monmouth Junction, NJ 08852, USA