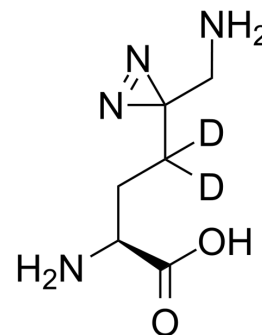


## Photo-lysine-d<sub>2</sub>

Cat. No.:	HY-D2283S1
Molecular Formula:	C <sub>6</sub> H <sub>10</sub> D <sub>2</sub> N <sub>4</sub> O <sub>2</sub>
Molecular Weight:	174.2
Target:	Isotope-Labeled Compounds
Pathway:	Others
Storage:	Please store the product under the recommended conditions in the Certificate of Analysis.



### BIOLOGICAL ACTIVITY

#### Description

Photo-lysine-d<sub>2</sub> is the deuterium labeled Photo-lysine. Photo-lysine is a DL-lysine-based photo-reactive amino acid, captures proteins that bind lysine post-translational modifications<sup>[1]</sup>.

### REFERENCES

[1]. Tangpo Yang, et al. Photo-lysine captures proteins that bind lysine post-translational modifications. Nat Chem Biol. 2016 Feb;12(2):70-2.

**Caution: Product has not been fully validated for medical applications. For research use only.**

Tel: 609-228-6898

Fax: 609-228-5909

E-mail: tech@MedChemExpress.com

Address: 1 Deer Park Dr, Suite Q, Monmouth Junction, NJ 08852, USA