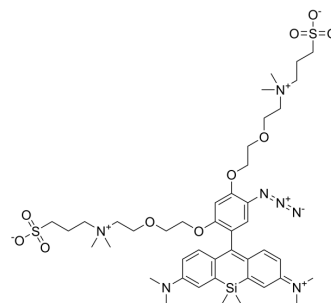


CalFluor 647 azide

Cat. No.:	HY-D2289
CAS No.:	1798306-01-0
Molecular Formula:	C ₄₃ H ₆₆ N ₇ O ₁₀ S ₂ Si ⁺
Molecular Weight:	933.24
Target:	Fluorescent Dye
Pathway:	Others
Storage:	Please store the product under the recommended conditions in the Certificate of Analysis.



BIOLOGICAL ACTIVITY

Description

CalFluor 647 azide is a fluorogenic azide probe that is activated by Cu-catalyzed or metal-free click reaction. CalFluor 647 azide is not fluorescent until it is reacted with alkynes^[1].

REFERENCES

- [1]. Subrata Munan, et al. Chronological development of functional fluorophores for bio-imaging. Chem Commun (Camb). 2024 Jan 11;60(5):501-521.
- [2]. Subrata Munan, et al. Chronological development of functional fluorophores for bio-imaging. Chem Commun (Camb). 2024 Jan 11;60(5):501-521.

Caution: Product has not been fully validated for medical applications. For research use only.

Tel: 609-228-6898

Fax: 609-228-5909

E-mail: tech@MedChemExpress.com

Address: 1 Deer Park Dr, Suite Q, Monmouth Junction, NJ 08852, USA