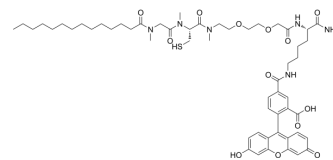


mgc(3Me)FL

Cat. No.:	HY-D2301
Molecular Formula:	C ₅₅ H ₇₆ N ₆ O ₁₃ S
Molecular Weight:	1061.29
Target:	Fluorescent Dye
Pathway:	Others
Storage:	Please store the product under the recommended conditions in the Certificate of Analysis.



BIOLOGICAL ACTIVITY

Description

mgc(3Me)FL is the active fluorescent form of mgc(3Me)FDA (HY-D2300) after hydrolysis in cells. mgc(3Me)FL subcellularly localizes to the Golgi apparatus and is a visualized Golgi probe. mgc(3Me)FL also binds to the outer leaflet of the plasma membrane (PM), causing the plasma membrane to fluoresce^[1].

REFERENCES

[1]. Sawada S, et al. Palmitoylation-Dependent Small-Molecule Fluorescent Probes for Live-Cell Golgi Imaging. ACS Chem Biol. 2023 May 19;18(5):1047-1053.

Caution: Product has not been fully validated for medical applications. For research use only.

Tel: 609-228-6898

Fax: 609-228-5909

E-mail: tech@MedChemExpress.com

Address: 1 Deer Park Dr, Suite Q, Monmouth Junction, NJ 08852, USA