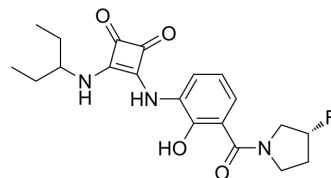


CXCR2 Probe 1

Cat. No.:	HY-D2310
Molecular Formula:	C ₂₀ H ₂₄ FN ₃ O ₄
Molecular Weight:	389.42
Target:	CXCR
Pathway:	GPCR/G Protein; Immunology/Inflammation
Storage:	Please store the product under the recommended conditions in the Certificate of Analysis.



BIOLOGICAL ACTIVITY

Description

CXCR2 Probe 1 (Compound [18F]16b) is a selective ligand for CXCR2 and is a radiotracer for PET imaging of neutrophils in inflammatory diseases^[1].

REFERENCES

[1]. Spatz P, et al. Development and Initial Characterization of the First 18F-CXCR2-Targeting Radiotracer for PET Imaging of Neutrophils. J Med Chem. 2024 Apr 25;67(8):6327-6343.

Caution: Product has not been fully validated for medical applications. For research use only.

Tel: 609-228-6898

Fax: 609-228-5909

E-mail: tech@MedChemExpress.com

Address: 1 Deer Park Dr, Suite Q, Monmouth Junction, NJ 08852, USA